

12dModel

Installing Wibu Network Dongles

July 2012

12D SOLUTIONS PTY LTD

ACN 101 351 991

PO Box 351 Narrabeen NSW Australia 2101

Australia Telephone (02) 9970 7117 Fax (02) 9970 7118

International Telephone 61 2 9970 7117 Fax 61 2 9970 7118

email support@12d.com web page www.12d.com

Disclaimer

12d Model is supplied without any express or implied warranties whatsoever.

No warranty of fitness for a particular purpose is offered.

No liabilities in respect of engineering details and quantities produced by 12d Model are accepted.

Every effort has been taken to ensure that the advice given in this manual and the program 12d MODEL is correct, however, no warranty is expressed or implied by 12D SOLUTIONS PTY LTD.

Copyright

This manual is copyrighted and all rights reserved.

This manual may not, in whole or part, be copied or reproduced without the prior consent in writing from 12D Solutions Pty Ltd.

Copies of 12d Model software must not be released to any party, or used for bureau applications without the written permission of 12D Solutions Pty Ltd.

Copyright (c) 1989-2012 by 12d Solutions Pty Ltd
Sydney, New South Wales, Australia.

ACN 101 351 991

All rights reserved.

Table of Contents

Installing Wibu Network Dongles	5
A Guide to the Notes	5
Definitions	6
Installing the Wibu Network Software	7
Starting the Wibu Network Server	20
Drivers for Client Computers Running 12d Model.....	21
Updating nodes.4d and env.4d	22
Updating nodes.4d	22
Updating env.4d.....	22
Mixtures of Wibu Dongles and Hardlock Dongles	25
The Wibu Network Server Monitoring Software.....	26
Monitoring Network Dongles from Other Computers.....	31
Wibu Client and Wibu Server in Different Subnets.....	32
Can't See the Network Dongle	32
Default Port address.....	35
Updating the Number of Licenses.....	36
Step 1: Generating the Wibu Context File (.rtc).....	37
Step 2a: Automatically Updating the Licenses with the .rtu File	42
Step 2b: Manually Updating the Licenses with the .rtu File	43
Errors Updating the Wibu Network Dongle	47
Replacing an Existing Network Dongle.....	48
Windows XP SP2 Problems.....	49

Installing Wibu Network Dongles

WARNING

Do not attach the network dongle to your computer until after you have installed the Wibu dongle drivers.

A Guide to the Notes

By default *12d Model* uses a Wibu **single user** dongle that allows *12d Model* to be run on any computer with the Wibu *single user* dongle attached to it. To run *12d Model* on another computer, the Wibu single user dongle must be moved to the new computer. And *12d Model* will stop running on the computer that no longer has the Wibu single user dongle attached to it.

12d Model can also use a Wibu **network** dongle for controlling three or more copies of *12d Model* that are then available to any user on any computer on the computer network.

These notes are for installing a new USB Wibu network dongle, for swapping Wibu network dongles or for monitoring Wibu network dongles.

To install/swap the network dongle you will need the **12d Model 10 Installation DVD** and the network dongle supplied by 12d Solutions Pty Ltd.

An Adobe Acrobat (PDF) copy of these notes is on the *12d Model 9 Installation DVD* in the folder **Documentation\Installing wibu network dongle**

WARNING

If the computers accessing the *Wibu* network dongle are in a **different subnet** (behind a **router**) to the *Wibu* network dongle then *12d Model* needs to be given the IP address or the computer names of the servers with the *Wibu* network dongles. This will be explained later in the notes. This will also apply to computers connected by Wireless or DHCP.

Please continue to the next section if you are installing a *Wibu* network dongle on the computer for the first time. If you already have a network dongle and are replacing it by a new network dongle, please go the section "Step 2a: Automatically Updating the Licenses with the .rtu File" on page 42.

Definitions

By default **12d Model** uses a Wibu **single user** dongle that allows **12d Model** to be run on any computer with the Wibu **single user** dongle attached to it. To run **12d Model** on another computer, the Wibu **single user** dongle must be moved to the new computer. And **12d Model** will stop running on the computer that no longer has the Wibu **single user** dongle attached to it.

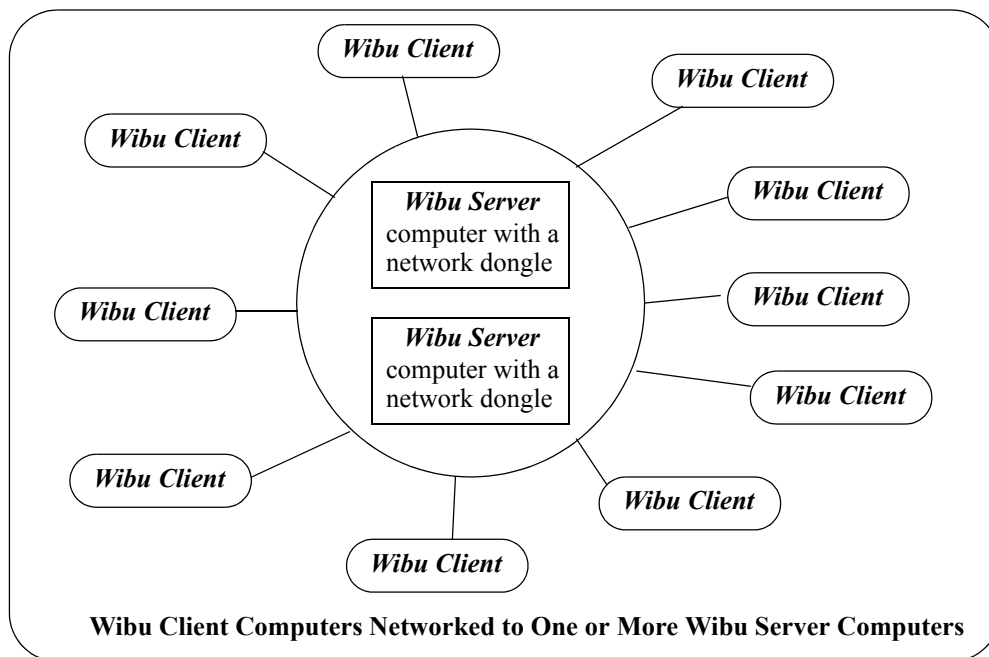
12d Model can also use a Wibu **network** dongle for controlling three or more copies of **12d Model** that are then available to any user on any computer on the computer network.

Wibu single-user dongle - a Wibu dongle that is attached to a computer and allows **12d Model** to be run on that computer only. This is the default installation for **12d Model**. Wibu **single user** dongles are a translucent green colour and are labelled with a number starting with **572d**

Wibu network dongle - a Wibu dongle that controls a set number of **12d Model** licenses. The Wibu **network** dongle can be accessed by any other computer on the network and allows copies of **12d Model** to be run on those computers. Each running copy of **12d Model** requires a license from the Wibu **network** dongle. Wibu **network** dongles are a solid colour and are labelled with a number starting with **e151**.

Wibu Server - a computer with a Wibu network dongle attached to it. Note that this can be any computer, it does not have to be a server.

Wibu Client - a computer that gets its **12d Model** licenses from a Wibu server. The Wibu Client computer does not have a Wibu network dongle attached to it.



Wibu Servers must have the Wibu dongle drivers and the Wibu Network Server software installed. This is described in “Installing the Wibu Network Software” on page 7.

Wibu Clients only need to have the Wibu dongle drivers installed. This is described in “Drivers for Client Computers Running 12d Model” on page 21.

Both **Wibu Servers** and **Wibu Clients** can have the **Wibu Network Server Monitoring** software installed. This software allows the computer to interactively monitor the use of the Wibu Servers. This is described in “Monitoring Network Dongles from Other Computers” on page 31

Installing the Wibu Network Software

WARNING - Do not attach the Wibu *network* dongle to your computer until after you have installed the Wibu dongle drivers.

This section is for installing a *Wibu network* dongle onto the computer for the first time. It covers the installation of the *Wibu dongle drivers*, the *Wibu Network Server* software and the *Wibu Network Monitoring* software.

If you already have a *Wibu network* dongle and are upgrading the number of licenses on the *Wibu network* dongle, please go the section “Step 2a: Automatically Updating the Licenses with the .rtu File” on page 42.

If you already have a *Wibu network* dongle and are replacing it by a new *Wibu network* dongle, please go the section “Step 2a: Automatically Updating the Licenses with the .rtu File” on page 42.

The first step is to install the *Wibu dongle drivers*, the *Wibu Network Server* and the *Wibu Network Server Monitoring* software on the computer that the *Wibu network* dongle will be attached to.

The *Wibu dongle drivers*, *Network Server* and *Network Monitoring* software are all installed from the **12d Model 9 Installation DVD**

You need to have System Administrator rights to install the Wibu dongle drivers.

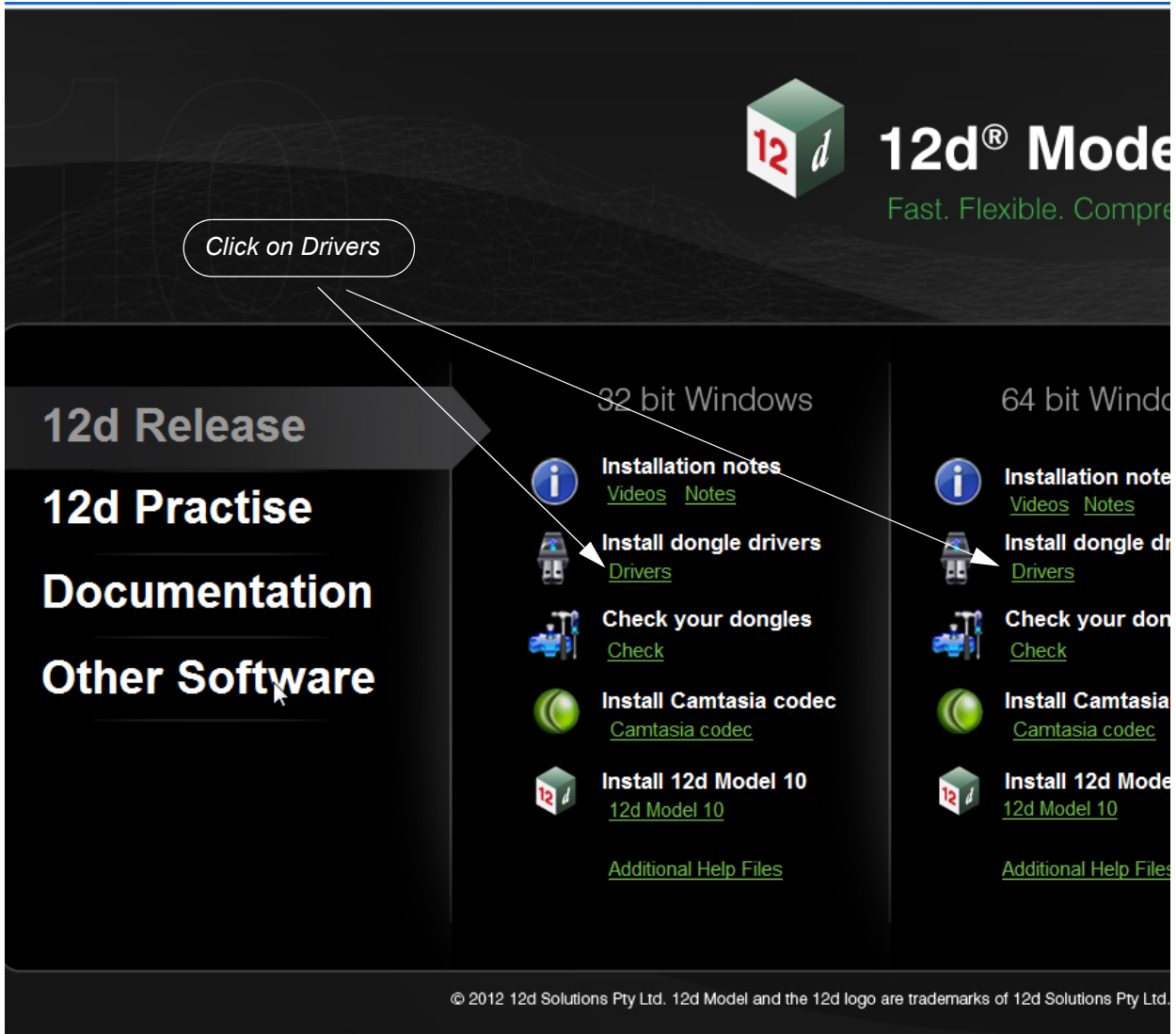
Step 1. Install the Wibu Dongle Drivers, Server and Monitoring Software

Insert the **12d Model 10 Installation DVD** into the DVD drive.

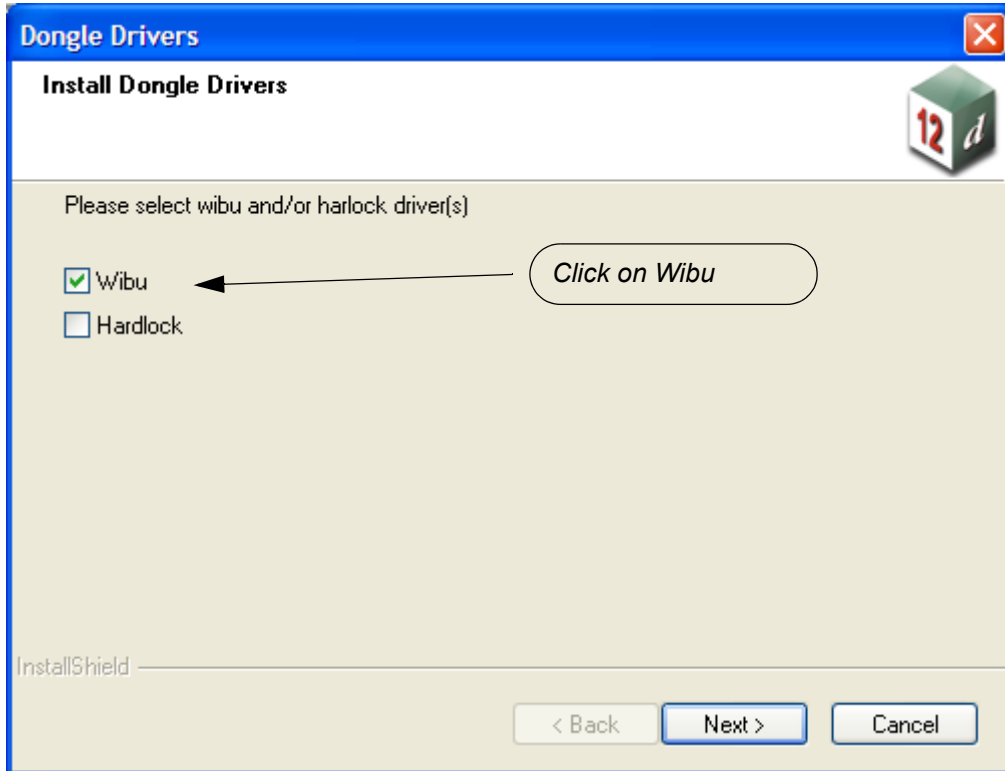
On inserting the DVD, the **12d Model 10 Installation** program automatically begins.

If it doesn't, simply double click on the program **Launch.exe** from the DVD.

The **12d Model Release** screen will appear.



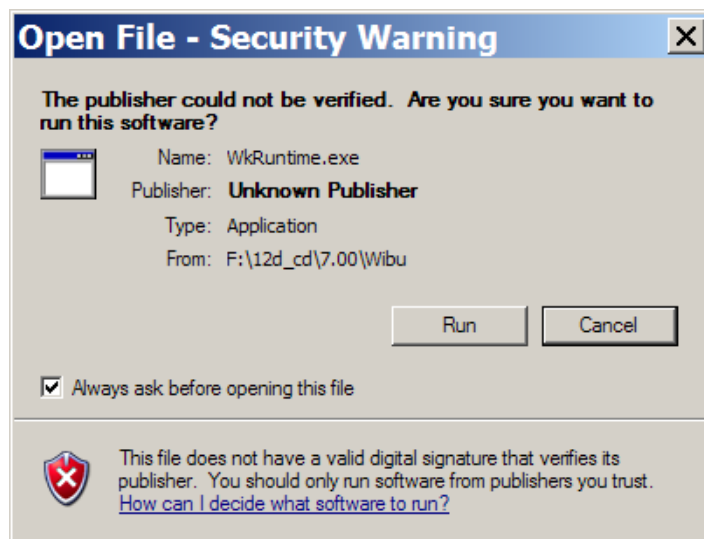
On the *12d Model Release* screen, under *Install Dongle Drivers*, click on **Drivers** to bring up the **Dongle Drivers** panel:



Tick on **Wibu** and then click **Next**:

The script to install the Wibu dongle drivers begins.

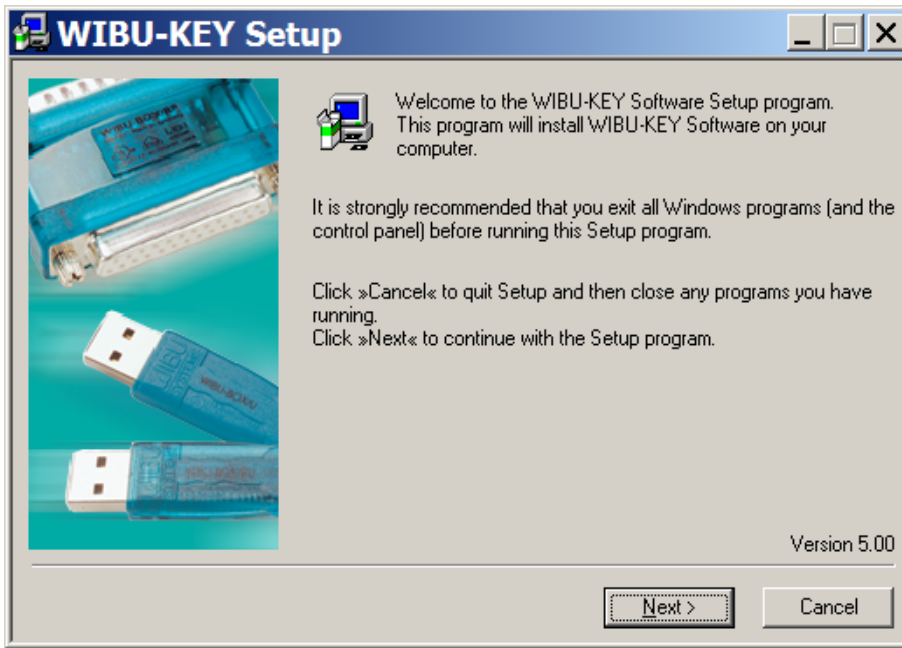
Under Windows XP you may get an *Open File - Security Warning*



select **Run** to continue

WIBU-KEY Setup

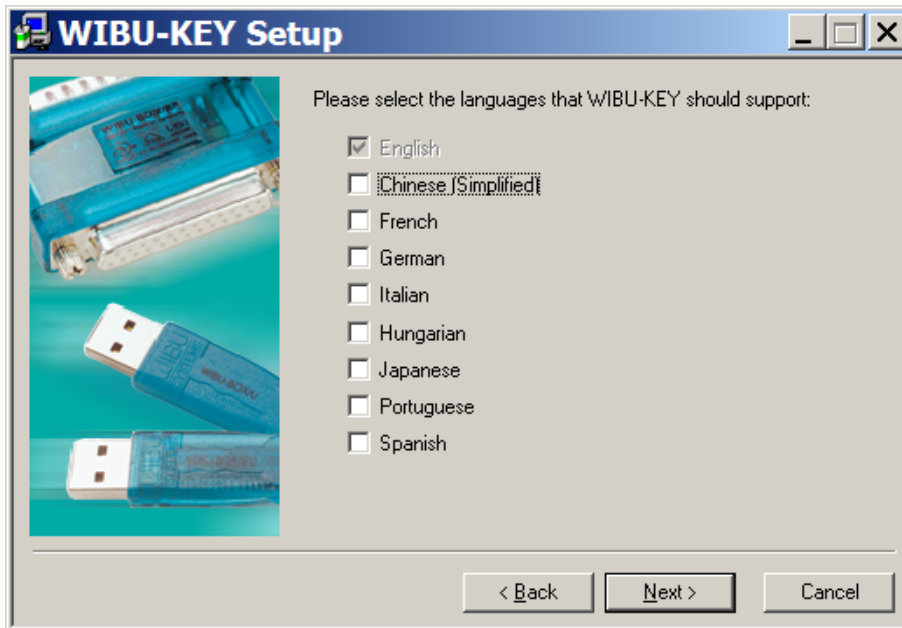
Welcome to WIBU-KEY Software Setup



select **Next** to continue

WIBU-KEY Setup

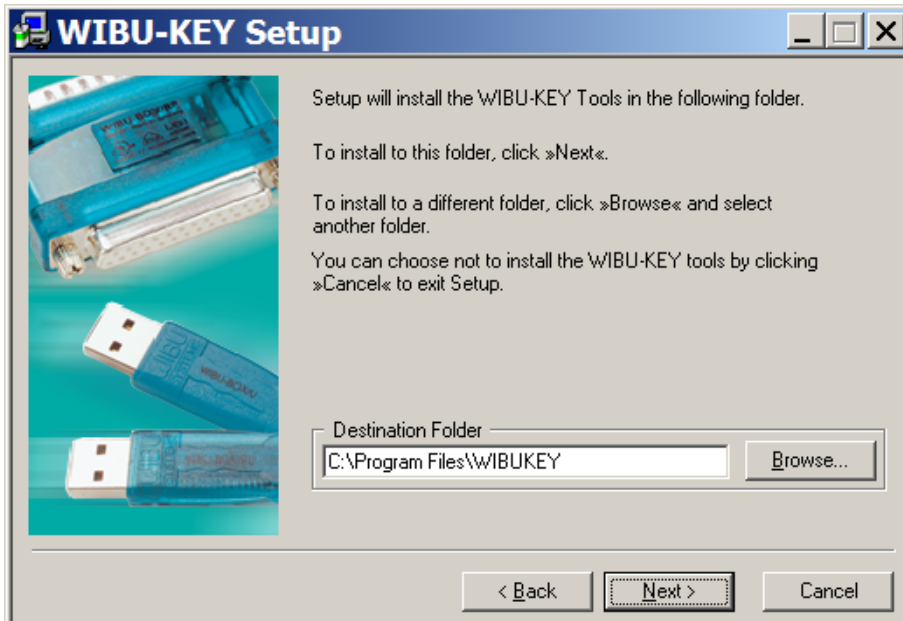
Language Selection



tick language and then select **Next** to continue

WIBU-KEY Setup

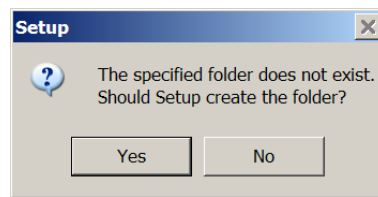
Installation folder



select **Next** to continue

WIBU-KEY Setup

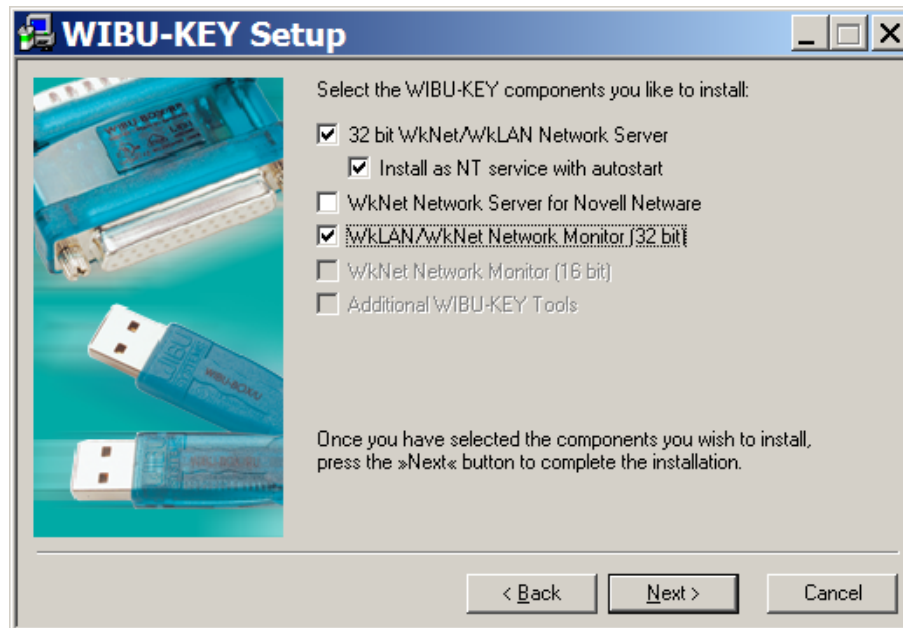
Installation folder doesn't exist



click **Yes** to continue

WIBU-KEY Setup

Component Selection



Tick on "32 bit WkNet/WkLAN Network Server"

- Tick on "Install as NT service with autostart"
- Tick on "WkLAN/WkNet Network Monitor (32 bit)"

select **Next** to continue to the *Tasks to be Performed* screen.

NOTE:

The "32 bit WkNet/WkLAN Network Server" and "Install as NT service with autostart" are required on the **Wibu Server** (i.e. the computer with the Wibu *network* dongle attached). It is not required on any other computer.

The "WkLAN/WkNet Network Monitor (32 bit)" installs the Wibu network dongle monitoring software.

FOR MONITORING ONLY

The Wibu network dongle can be interactively monitored from any computer, not just from the computer with the Wibu network dongle attached to it.

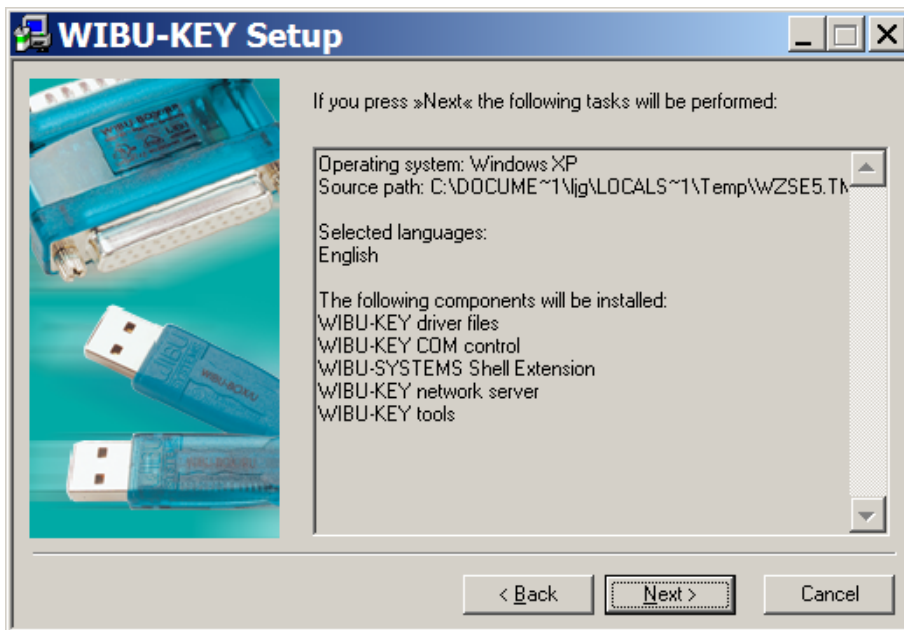
When monitoring from a computer without the network dongle attached, only the *Wibu Network Monitor* software needs to be installed and the Network Server software is not needed.

So for monitoring only:

- Don't tick "32 bit WkNet/WkLAN Network Server"
- Don't tick "Install as NT service with autostart"
- Tick on "WkLAN/WkNet Network Monitor (32 bit)"

WIBU-KEY Setup

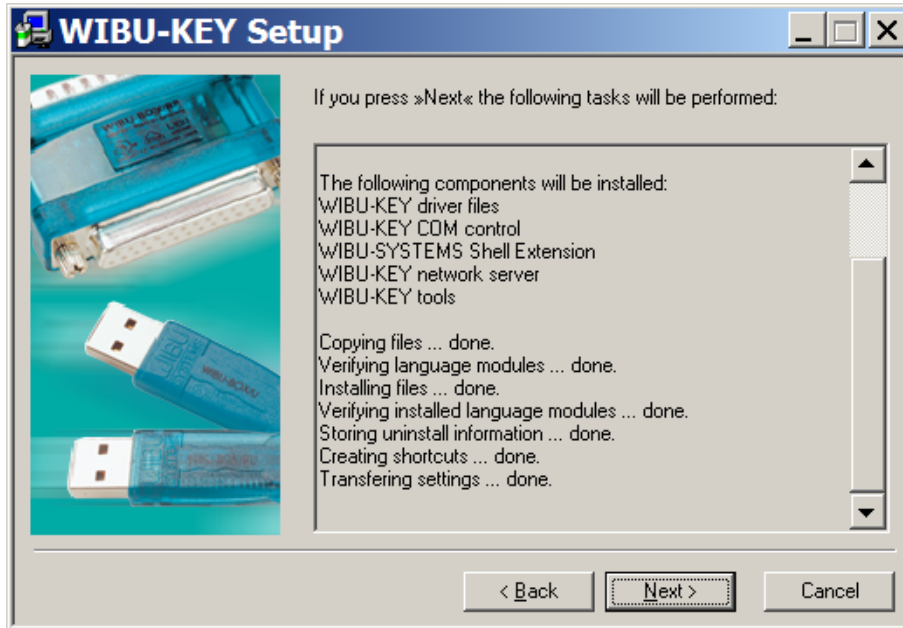
Tasks to be Performed



select **Next** to continue

WIBU-KEY Setup

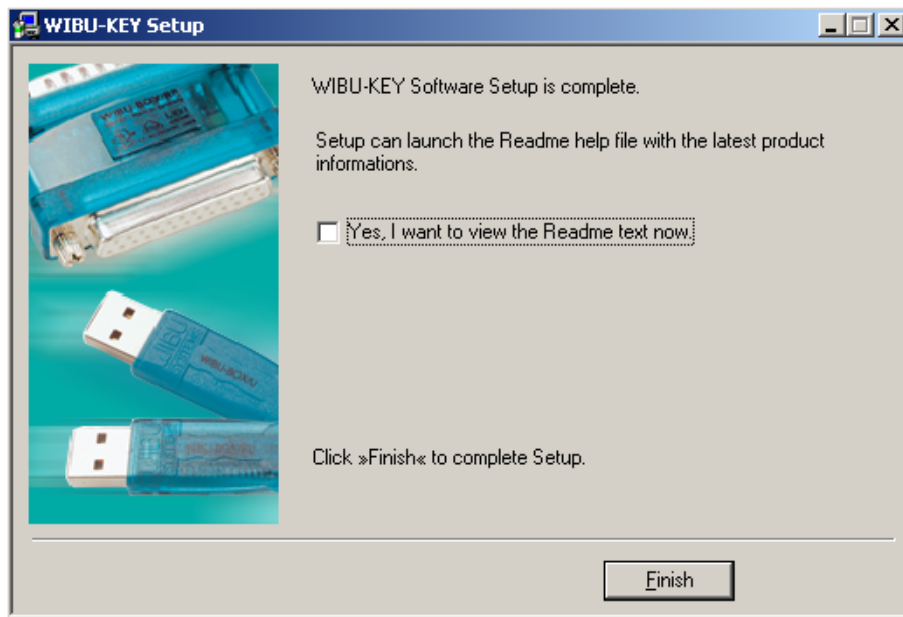
Tasks done



select **Next** to continue

WIBU-KEY Setup

Setup Complete

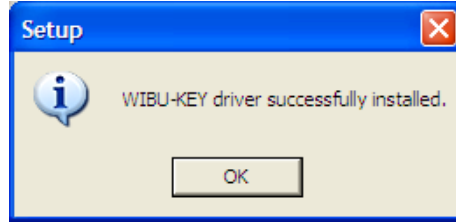


Un-tick "Yes, I want to view the Readme text now"

select **Finish**

Setup

Setup OK



click **OK**

The *Wibu dongle drivers* and the *Network Server* and *Network Monitor* software have now been installed.

The **Install 12d Model Release** screen will then re-appear.

12d® Model 10
Fast. Flexible. Comprehensive.

12d Release
12d Practise
Documentation
Other Software

32 bit Windows

- Installation notes [Videos](#) [Notes](#)
- Install dongle drivers [Drivers](#)
- Check your dongles [Check](#)
- Install Camtasia codec [Camtasia codec](#)
- Install 12d Model 10 [12d Model 10](#)
- [Additional Help Files](#)

64 bit Windows

- Installation notes [Videos](#) [Notes](#)
- Install dongle drivers [Drivers](#)
- Check your dongles [Check](#)
- Install Camtasia codec [Camtasia codec](#)
- Install 12d Model 10 [12d Model 10](#)
- [Additional Help Files](#)

© 2012 12d Solutions Pty Ltd. 12d Model and the 12d logo are trademarks of 12d Solutions Pty Ltd. **Exit**

Step 2. Attach the Dongle

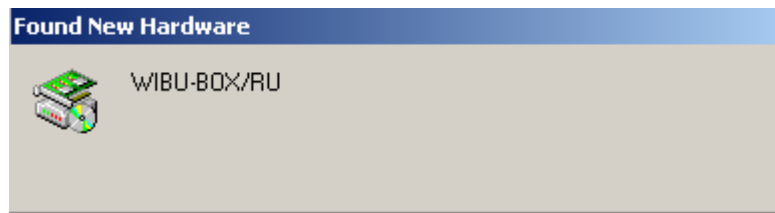
Attaching the Dongle:

The 12d Model Wibu network dongle can now be attached to the USB port on the computer.

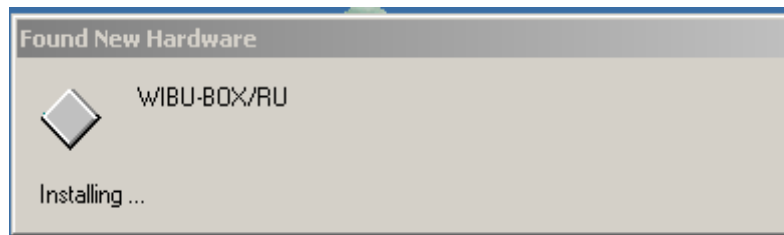
Warning: you must have System Administrations rights the first time you attach a USB dongle to any USB port:

When a USB dongle is attached for the first time to any USB port, Windows will detect that it is new hardware and needs to load the dongle drivers for that USB port - this will require System Administration rights.

Since the dongle drivers have already been loaded onto your computer, when the USB dongle is attached to a new USB port, it will be recognised as new hardware



and Windows should automatically install the correct dongle driver.



IMPORTANT NOTE IF THE WIBU DONGLE IS NOT RECOGNISED:

If the WIBU dongle is not recognised and you get the "Found New Hardware" screen



please go to the section “Windows XP SP2 Problems” on page 49 on how to find the Wibu drivers

NOTE - even though your dongle is working on one USB port and then you no longer need System Administration rights to attach the dongle to that USB port, if you try and attach the dongle to a new USB port, you will need System Administration rights to install the dongle drivers on the new USB port.

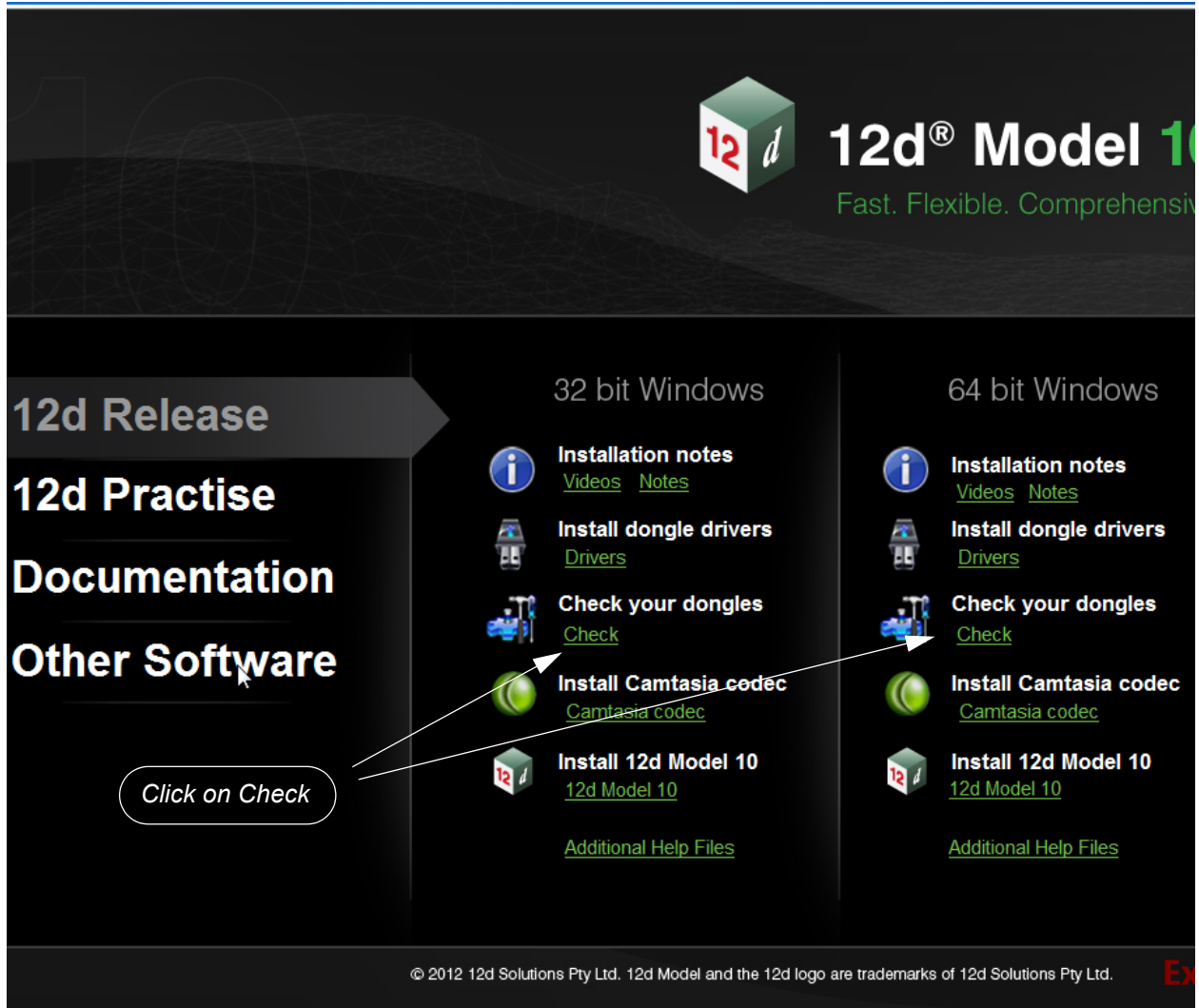
The dongle must be attached to the USB port at all times, otherwise 12d Model will stop running.

Step 3.Reboot the Computer

After installing the Wibu dongle drivers, reboot the computer.

Step 4. Checking the Wibu Network Dongle

After the computer has rebooted, insert the *12d Model 9 Installation DVD* again.

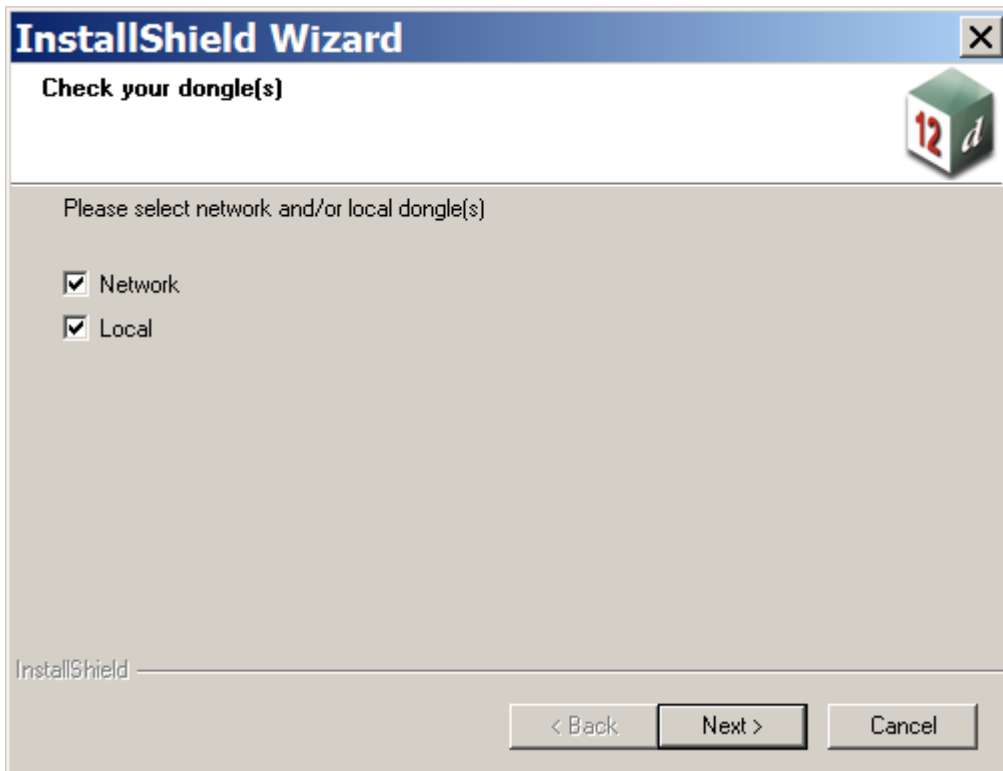


On the **12d Model Release** screen, click on *Check*:

The dongle checking program begins.

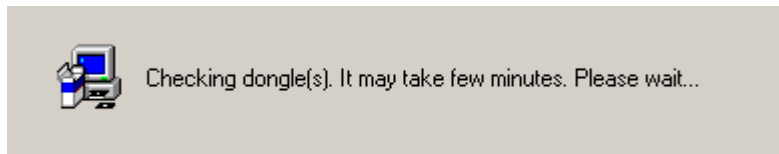
Installation

Installation message



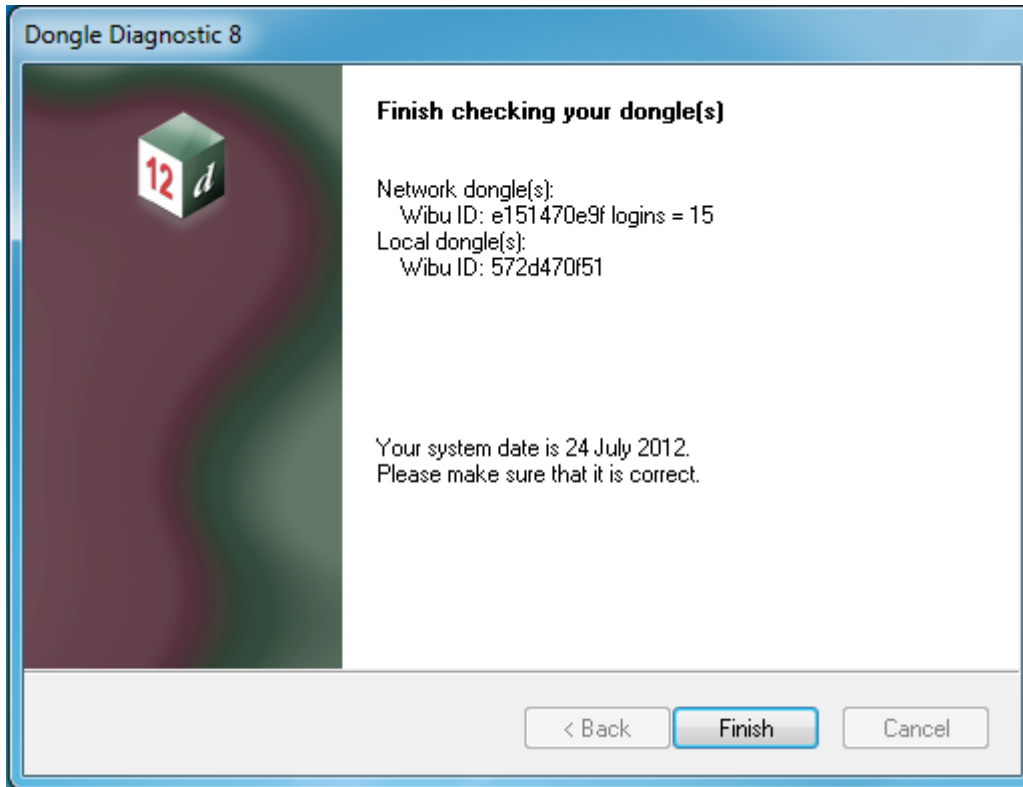
Tick "Network" and "Local" and select **Next**

The computer/network will be checked for dongles.



NOTE - this only finds *Wibu Servers* on the same subnet. If the *Wibu Server* resides in a **different subnet** (behind a router), the *Wibu Client* must be given the IP address or computer name of the *Wibu Server*. For more information, go to the section "Can't See the Network Dongle" .

Check Report



The correct network dongle number should be displayed and also a check on the date in the computer is correct.

select **Finish**

This completes the dongle *Check*.

The **12d Model Release** screen will then appear.

Click on **Exit** to exit the Installation DVD.

Starting the Wibu Network Server

The *Wibu Network Services* should now start and an icon will be visible on the toolbar:



Wibu Network Services Icon

If the *Wibu Network Service* is not running, start it by selecting

Start =>Programs =>WIBU-KEY =>Network Server

The *Wibu Network Services* must be running on the computer with the *Wibu network* dongle attached to it.

NOTE:

The *Wibu Network Services* is only installed and run on the **Wibu Server** (i.e. the computer that has the *Wibu network* dongle attached to it).

Drivers for Client Computers Running 12d Model

The *Wibu Network Services* should only be installed on the computers with *Wibu network* dongles attached (the *Wibu Server* computers).

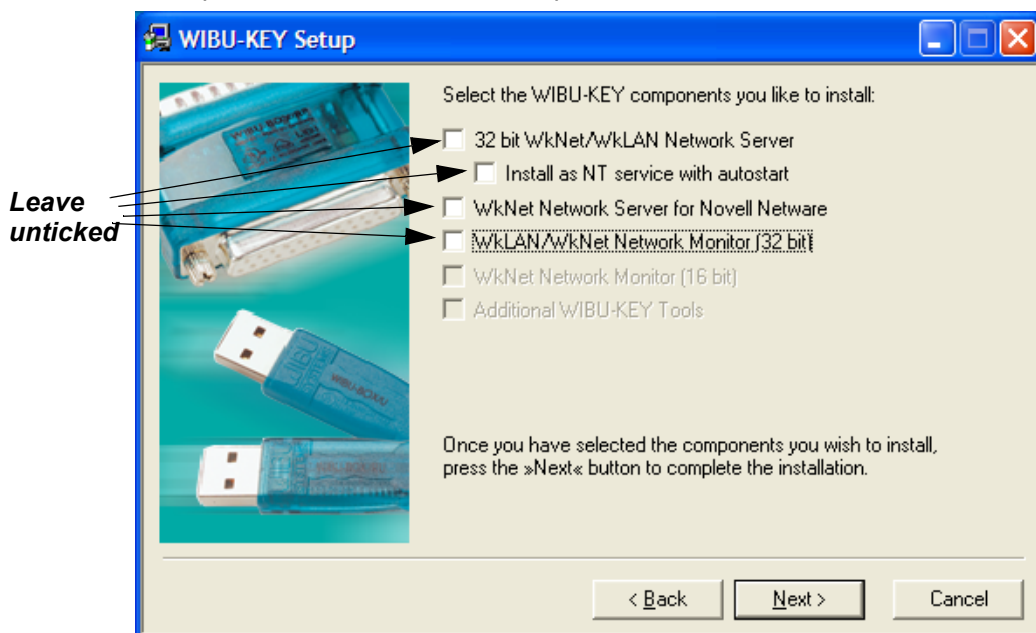
On *all* other computers that will run **12d Model** but do not have any *Wibu network* dongles attached (i.e. *Wibu Clients*), only the *Wibu dongle drivers* need to be installed.

The *Wibu dongle drivers* are installed by following the installation instructions given in the section "Installing the Wibu Network Software" on page 7 except **neither** the "32 bit WkNet/WkLAN Network Server", the "Install as NT service with autostart" or the "WkLAN/WkNet Network Monitor (32 bit)" are ticked on.

That is:

WIBU-KEY Setup

Component Selection



NOTE FOR WIBU CLIENTS:

This is exactly the same *Wibu dongle driver installation* that is required when using a *Wibu single-user* dongle. So if the computer has already been using a *Wibu single-user* dongle with **12d Model**, then the *Wibu dongle drivers* have already been installed and will not have to be installed again.

So if a *Wibu network* dongle is introduced, all the computers that are currently running **12d Model** with a *Wibu single-user* dongle will not need *Wibu drivers* installed.

However, such **Wibu Client** computers will need a modification to their *env.4d* file to tell the computer that **112d Model** licenses can be obtained from a *Wibu network* dongle rather than a *Wibu single-user* dongle (see "Updating nodes.4d and env.4d" on page 22).

Updating nodes.4d and env.4d

When **12d Model** is installed on a computer from the *12d Model 9 Installation DVD*, it assumes that only a *single-user* Wibu dongle is being used. Hence the default *env.4d* needs to be modified to tell **12d Model** to access licenses from Wibu *network* dongles (Wibu Servers). Also the *nodes.4d* file must contain the authorization information for the Wibu network dongles.

Updating nodes.4d

For each computer that accesses Wibu *network* dongles, the authorization information for the Wibu *network* dongle must be added to the *nodes.4d* file accessed by **12d Model** on the computer.

The default folder for the *nodes.4d* file is

c:\12d\10.00

or, the environment variable AUTHORIZATION_4D in the *env.4d* used by **12d Model** on that computer can be set to point to a *nodes.4d* file with the network dongle authorization information in it.

Note that *nodes.4d* can contain the authorization information for more than one dongle (many single user and/or network dongles).

Updating env.4d

For each computer that needs to access the Wibu *network* dongle, a modification has to be made to the *env.4d* file for that computer to tell it to search for a Wibu *network* dongle.

In the initial **12d Model** installation, the *env.4d* file is installed in the folder

Program files\12d\12dmodel\10.00\Set_ups

Files in *Set_ups* are supplied by 12D Solutions and should not be modified.

However **12d Model** looks for an *env.4d* in the folder *User* from c:\12d\10.00 before looking in the folder *Set_ups*.

So copy the *env.4d* file from *Set_ups* into the folder

c:\12d\10.00\User

and edit the *env.4d* file in *User*.

Now in the *env.4d* file add the lines:

```
WIBU_4D          1          // says there are Wibu dongles
HARDLOCK_4D      0          // says there are no Hardlock dongles
WIBU_DONGLE_4D  parameters // where each parameter is separated by
                                     // at least one space
```

where the parameters for WIBU_DONGLE_4D include:

```
-network_first  look for a network dongle first
-network_last   look for a local dongle first and then network dongle last
-no_network     don't look for a network dongle
-local          look for a single-user (local) dongle
-no_local       don't look for a single-user (local) dongle
-login_retires  number_of_retries  which defines how many retries
```

are made to see the dongle
 -login_wait *seconds_to_wait* number of seconds to wait between retries.

For example,

```
WIBU_DONGLE_4D -local -network_last // look for single-user dongle first, then a network
dongle
WIBU_DONGLE_4D -network_first // look for a network dongle first and then a local
dongle
or WIBU_DONGLE_4D -network_last // look for a local dongle first and then a network
dongle
or WIBU_DONGLE_4D -network_first -no_local // looks for network dongle only, no local
```

Note in the above examples that it is possible to set *env.4d* up so that if there is a *single-user* local dongle on the computer then it will be used by **12d Model** but if no *single-user* local dongle exists, then **12d Model** uses the Wibu *network* dongle.

For make searching for the Wibu *network* dongle faster on large network, the IP address of the computer with the Wibu *network* dongle can be included in the *env.4d* file.

Simply add the line

```
WIBU_IPADDR IP address for the machine with the network dongle
or WIBU_IPADDR Name of the computer with the network dongle
```

For example,

```
WIBU_DONGLE_4D -network_last
WIBU_IPADDR 192.9.200.110
or WIBU_IPADDR Lithium // the name of the computer with the network dongle.
```

Also there can be **more than one** Wibu Server. That is, there can be more than one computer with a Wibu *network* dongle attached.

If you wish to search for more than one Wibu network dongle, simply add the additional IP addresses or computer names to the WIBU_IPADDR command with each one **separated by commas**.

The computers will be *searched* for free licenses on the Wibu Servers in the order that they appear in the WIBU_IPADDR list.

For example,

```
WIBU_IPADDR Lithium, Anna
```

will search for free licenses on the computer *Lithium* and if none are available, will then search for free licenses on the computer *Anna*. If **no** licenses are available then **12d Model** will not be authorised to run.

The WIBU_IPADDR command can also be used to *limit* access to only certain Wibu Servers. For example, there maybe a specific **12d Model** Wibu *network* dongle with special modules authorised. The WIBU_IPADDR command could then be set to only look at that Wibu Server.

All the environment variables defined above can be typed into the *env.4d* file or they can be set from a running **12d Model** by using the *Projects =>env.4d* option.

WARNINGS

1. If you repeat an environment variable in a file, the last occurrence is the one that is used.

2. Projects can have a local `env.4d` file and when the project is selected, the local `env.4d` is used. If the local file does not have the correct network information in it (e.g. `WIBU_DONGLE_4D 1` etc.) then the authorisation will fail because *12d Model* is no longer being instructed to use the network dongle.

Mixtures of Wibu Dongles and Hardlock Dongles

The above setting allow the order for access to a *Wibu single-user* dongle or a *Wibu network* dongle to be easily controlled.

However prior to **12d Model 7**, *12d Solutions* were using *Hardlock single-user* and *Hardlock network* dongles. So as a **12d Model user**, it is possible to have various combinations of *Hardlock* and *Wibu* dongles.

Note that *12d Solutions* do not support access to both *Hardlock network* dongles **and** *Wibu network* dongles at the same time.

But you can have a *Hardlock network* dongle and *Wibu* and *Hardlock single-user* dongles and access a local *Wibu* or *Hardlock single-user* dongle first and if no *single-user* dongle is found, then use the *Hardlock network* dongle.

or

You can have a *Wibu network* dongle and *Wibu* and *Hardlock single-user* dongles and access a local *Wibu* or *Hardlock single-user* dongle first and if no *single-user* dongle is found, then use the *Wibu network* dongle.

For these mixed situations, from **12d Model V71g** onwards, there is another environment variable `DONGLE_ORDER_4D` which control what brand of dongle is searched for first

```
DONGLE_ORDER_4D  w      // search for Wibu dongles first
or DONGLE_ORDER_4D  h      // search for Hardlock dongles first
```

Case 1: Wibu network dongle; access Wibu or Hardlock single-user dongles first.

```
HARDLOCK_4D      1          // there are Hardlock dongles
WIBU_4D          1          // there are Wibu dongles
WIBU_DONGLE_4D  -local  -network_last // look for single-user first then Wibu
network
DONGLE_4D      -no_network // don't look for Hardlock network dongles
DONGLE_ORDER_4D  h          // search for Hardlock dongles first
```

Case 2: Hardlock network dongle; access Wibu or Hardlock single-user dongles first

```
HARDLOCK_4D      1          // there are Hardlock dongles
WIBU_4D          1          // there are Wibu dongles
DONGLE_4D      -local  -network_last // look for single-user first then Hardlock
network
WIBU_DONGLE_4D  -no_network // don't look for Wibu network dongles
DONGLE_ORDER_4D  w          // search for Wibu dongles first
```

All the environment variables defined above can be typed into the `env.4d` file or they can be set from *12d Model* by using the `Projects =>env.4d` option.

IMPORTANT NOTE:

Mixtures of *Hardlock network* dongles and *Wibu network* dongles are not support. All the *network* dongles must be of the same type.

The Wibu Network Server Monitoring Software

The *Wibu Network Server Monitor* software is used to interactively monitor the *12d Model* usage of the Wibu network dongle. It can be run from any computer as long as the *Wibu Network Monitor* software has been installed.

The *Wibu Network Server Monitor* software is started by selecting

Start =>Programs =>WIBU-KEY =>Server Monitor

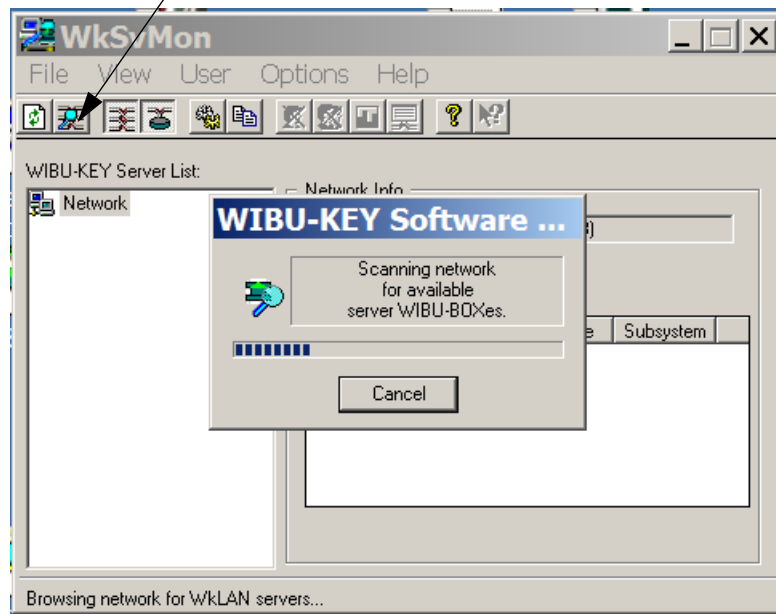
This will bring up the *WkSvMon* panel.

WkSvMon can be set to automatically scan the local IP subnet on startup looking for Wibu network dongles and/or automatically check the network dongles at a regular interval and update the list of users on each network dongle.

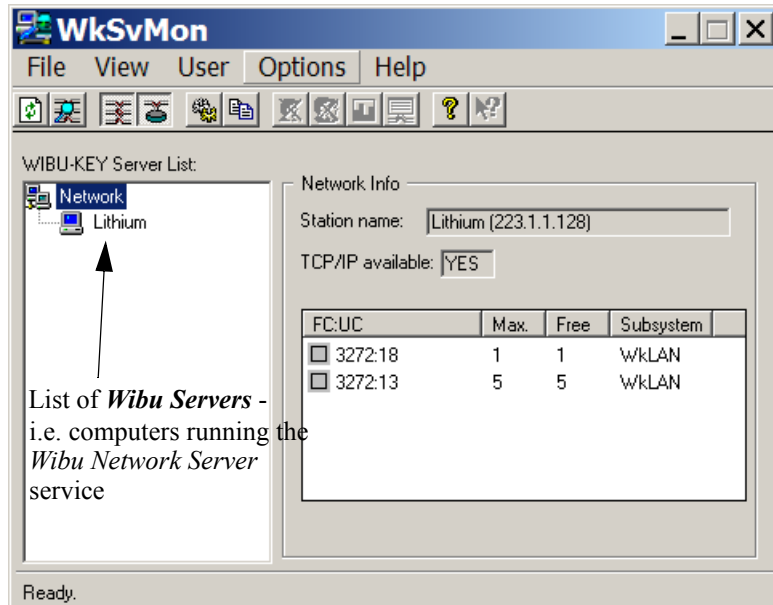
If subnet scanning has not been set to automatically happen, the network can be browsed by clicking on the *Browse* icon or on the menu item

View =>Browse Network.

Browse Network icon



The network will then be scanned for all computers with the Wibu network services running, and any *Wibu* network dongles and users of the dongles. The results are displayed in the WIBU-KEY Server list.



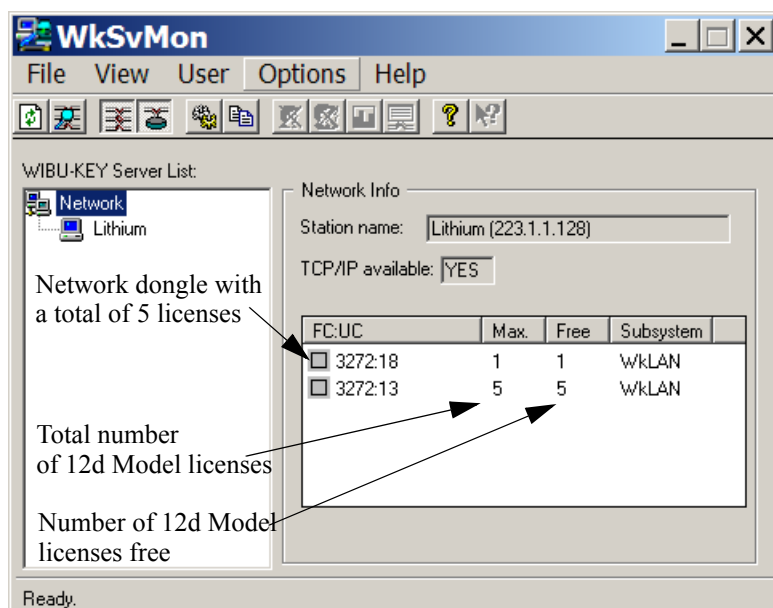
In this case it has found just the one *Wibu Server* (computer running the *Wibu Network Server* service) - the computer *Lithium*.

The network scan accesses all the *Wibu network* dongles collecting information on how many licenses are available on each *Wibu network* dongle and what users are connected to them.

Clicking on the word *Network* lists in the right hand box, all the *Wibu network* dongles available, together with the maximum number of *12d Model* licenses available and how many are still available (free).

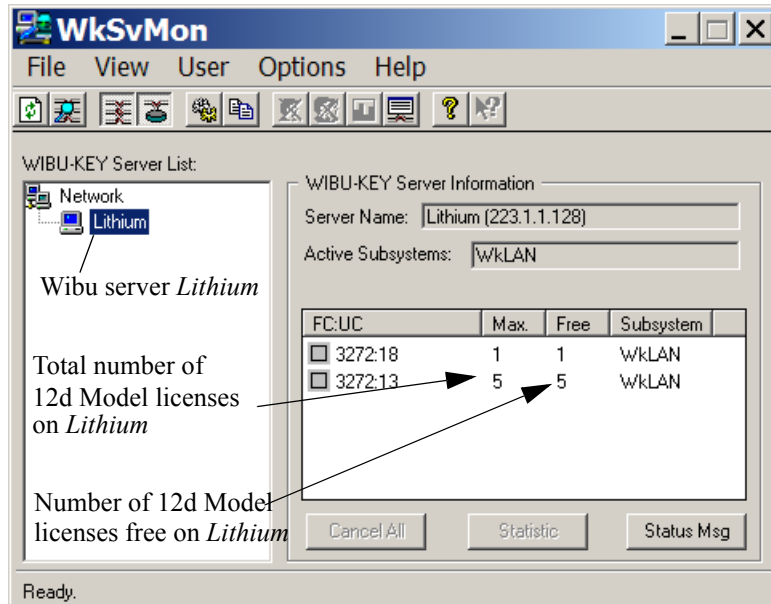
There is a *3272-n* (n not equal to 13) entry for each *Wibu network* dongle where n-13 is the maximum number of *12d Model* licenses available for that network dongle (3272 indicates it is a *12d Model* *Wibu network* dongle).

There is also an additional *3272-13* entry which lists the total (*Max*) number of *12d Model* licenses on all the listed network dongles and the number of licenses not being used (*Free*).



So in the above example, there is only one Wibu *network* dongle on the network and five (5) licenses available.

Clicking on a **Wibu Server** name, lists those Wibu *network* dongles attached to that computer. Again the entry 3272-13 lists the total number of **12d Model** licenses available on that particular computer.

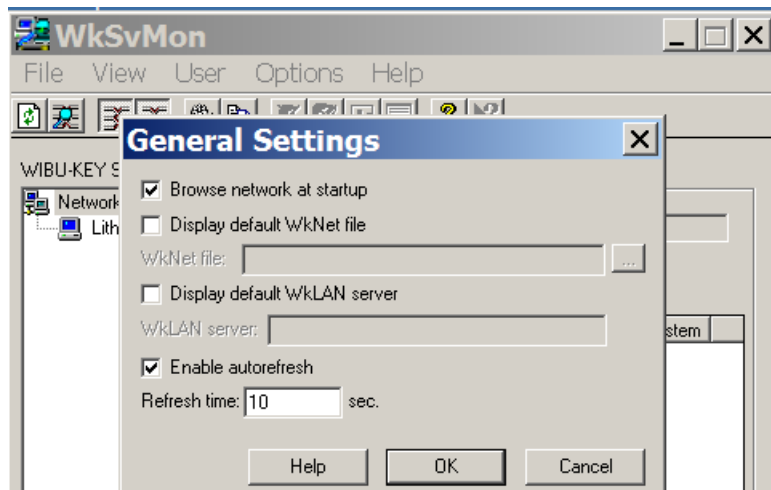


SETTING AUTOMATIC BROWSE:

To set the *Wibu Server Monitor* to browse the network on start up and/or automatically check and update the list of users on each network dongle at a regular interval, select

Options =>General Settings

to bring up the *General Settings* panel.



Tick on "*Browse network at startup*" and tick on "*Enable autorefresh*" and sent the "*Refresh time*" to a non-zero value, say 10 seconds. Then select **OK**.

This sets the parameters for the *Wibu Server Monitor* so that it scans the network when the software is started and will refresh the activity for those dongles is found.

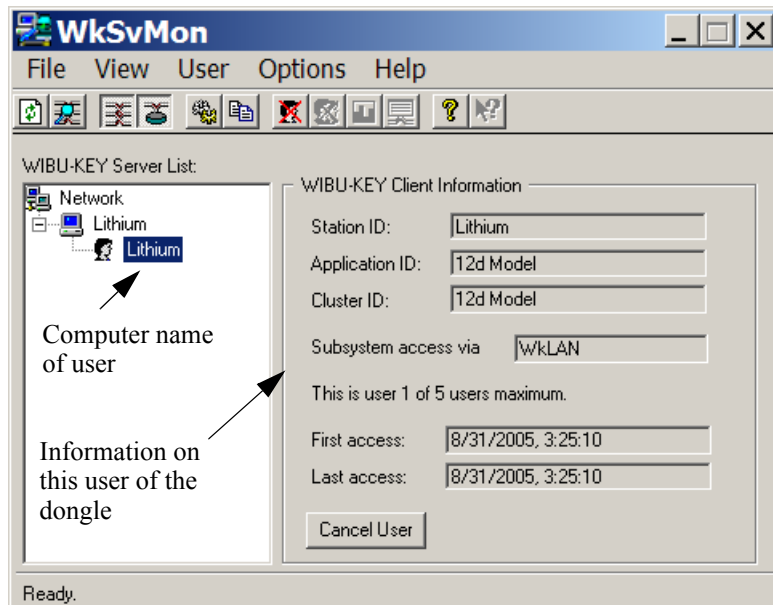
So when automatically scanning is set, the *Wibu Server Monitor* regularly checks the Wibu *network* dongles at the regular interval and updates the computer names of the all computers running the Wibu *network* server, lists all Wibu *network* dongles on the computers and updates all the users on each Wibu *network* dongle.

IMPORTANT NOTE - Do not use a Refresh time of 0.

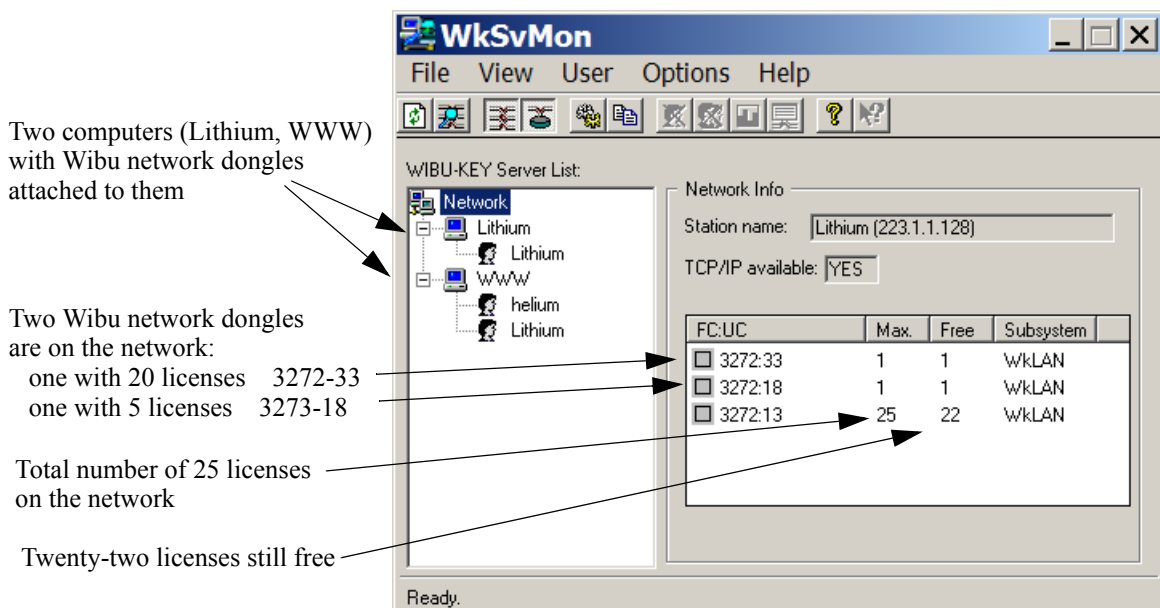
Back to the Server Monitor:

A + appearing to the left of a computer name indicates that there are users on the Wibu network dongles attached to that Wibu Server. Clicking on the + beside the Wibu Server name (e.g. Lithium) displays the names of all the users on the network dongles on that Wibu Server. In the case below there is only one user and it is also from the computer Lithium. So Lithium is a Wibu Server and also has a **12d Model** user on it.

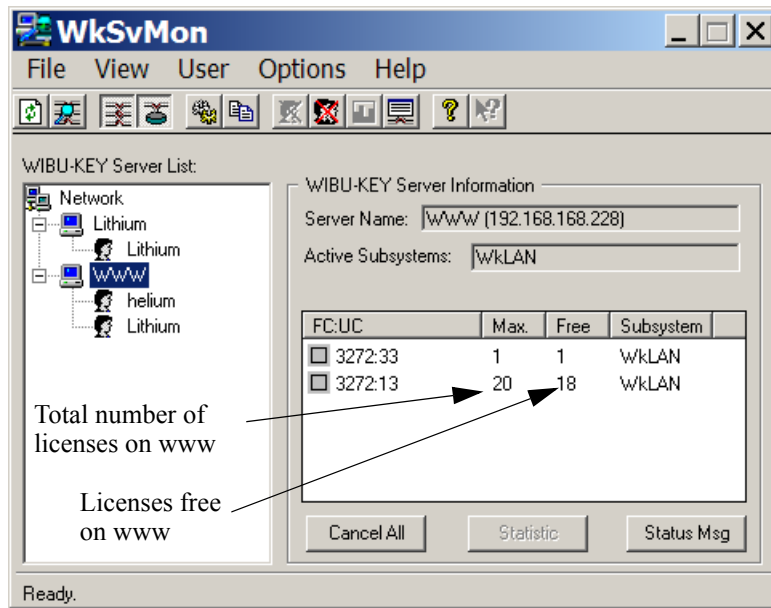
Clicking on the user name, displays information about the user.



When there is more than Wibu Server (i.e. more than one computer with a Wibu network dongle), the Wibu Server Monitor shows each of the computers, and by clicking on the + beside each computer, the users on that computer can be displayed.



Clicking on each *Wibu Server* gives the information about the *network* dongles on that computer.



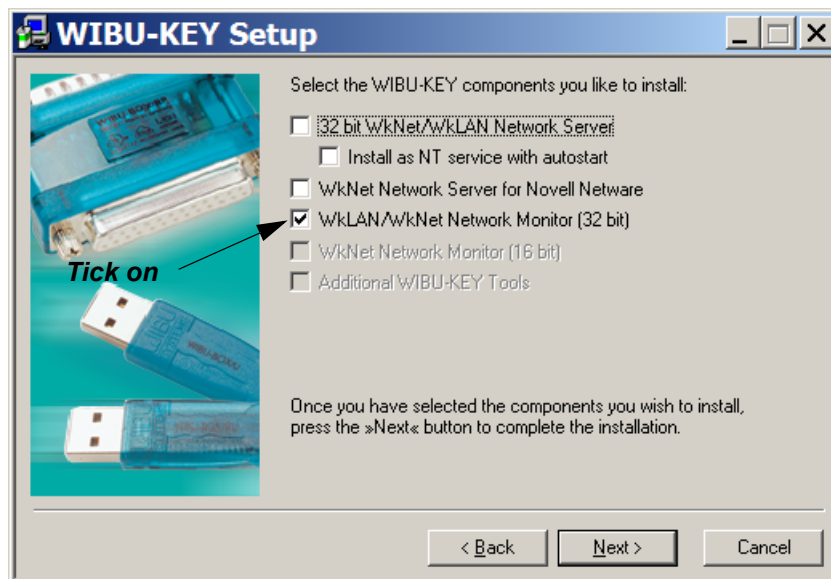
And clicking on each user on each Wibu Server gives more information on that user.

Monitoring Network Dongles from Other Computers

As discussed in the section “The Wibu Network Server Monitoring Software” on page 26, the *Wibu Network Server Monitoring* software can be used to monitor all the Wibu *network* dongles on the network. It displays how many licenses are available for each network dongle, how many licenses are being used on each *Wibu Server* and the IP address of the users on a network dongle.

The *Wibu Network Server Monitoring* software can be run on any computer in the network, not just those with Wibu network dongles attached. If the *Wibu Network Server Monitoring* software is not installed on the computer, simply follow the installation instructions for installing the Wibu Dongle Drivers given in the section “Installing the Wibu Network Software” on page 7 except only select the component “WkLAN/WkNet Network Monitor (32 bit)”.

That is:



The *Wibu Network Server Monitor* software is started by selecting

Start =>Programs =>WIBU-KEY =>Server Monitor

Wibu Client and Wibu Server in Different Subnets

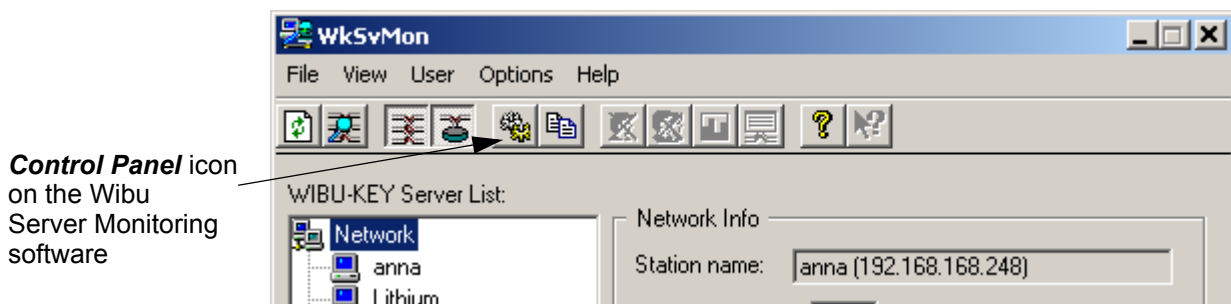
Can't See the Network Dongle

If the *Wibu Client* and the *Wibu Server* are on the same subnet, then the *Wibu Monitoring software* or *12d Model* on the *Wibu Client* can automatically find the *Wibu Server* by issuing a search broadcast in the local IP subnet.

If the *Wibu Server* resides in a **different subnet** (behind a router) or the *Wibu Server* is programmed not respond to the broadcast messages, the *Wibu Client* must be given the IP address or computer name of the *Wibu Server*. Then the *Wibu Client* will not have to broadcast to find a *Wibu Server* but can send messages directly to the *Wibu Server*.

The *Wibu Client* can be given the IP address (or the computer name) of the *Wibu Server* by typing the IP address into the *WkLAN Server Search List* in the *Wibu Control* panel or by specifying the *Wibu Server* in the `WIBU_IPADDR` command in the *12d Model* `env.4d` file. Both these methods will now be described.

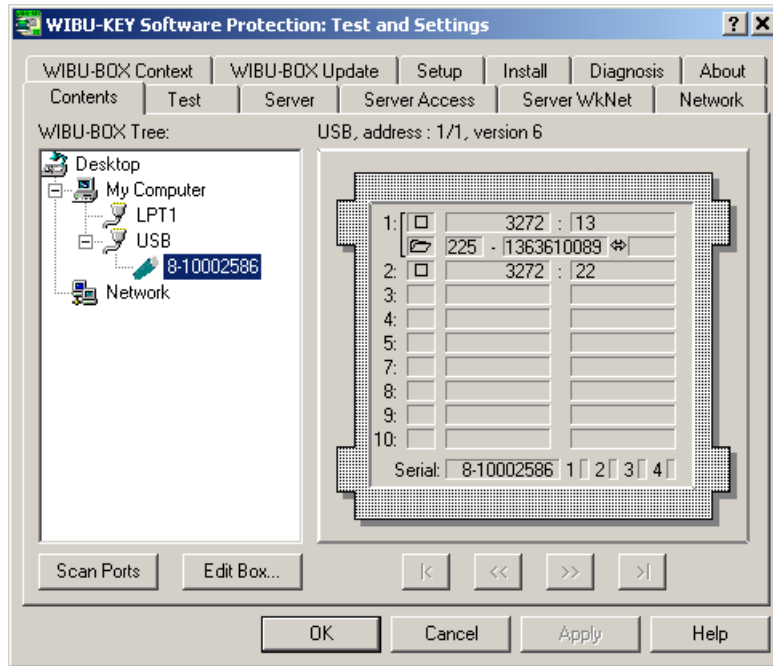
The *Wibu Control* panel is accessed by either clicking on the *Control panel* icon on the *Wibu Monitoring* software running on the *Wibu Client*,



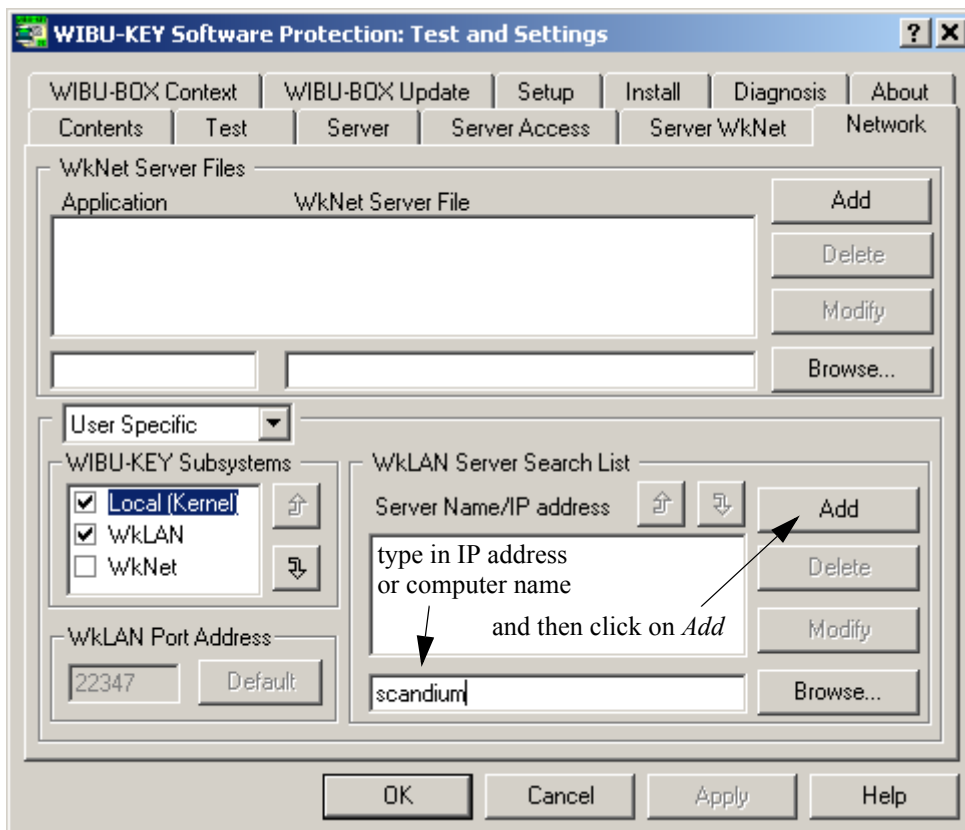
or if the *Wibu Network Server Monitoring* software is not running, by simply selecting

Start =>Settings =>Control Panel =>WIBU-KEY

In either case, the *WIBU-KEY Software Protection: Test and Settings* dialogue is displayed:

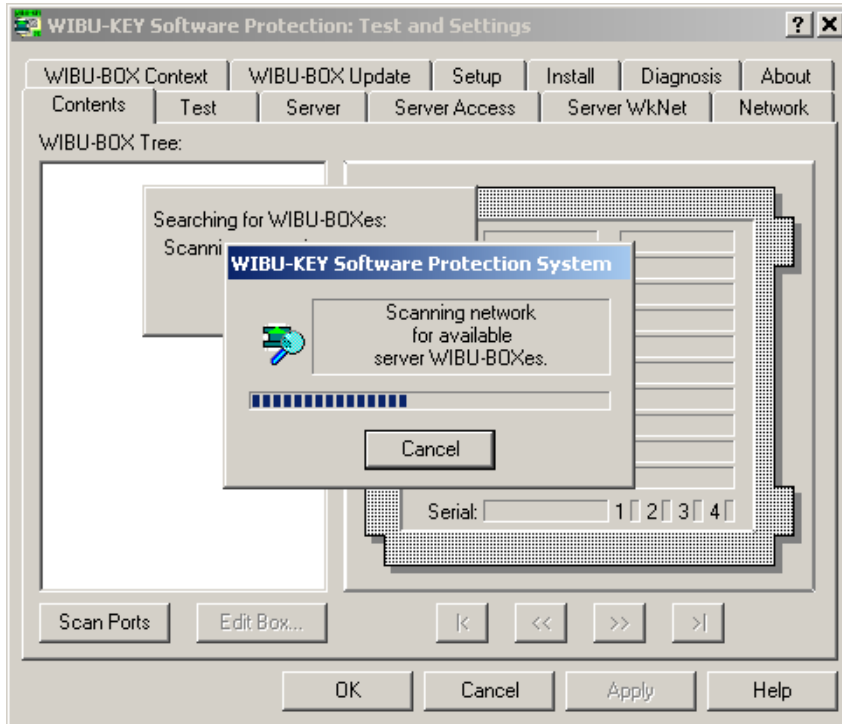


To set the IP address of the *Wibu Sever*, click on the *Network* tab and then type in the IP address (or computer name) of the Wibu Server and click on *Add*

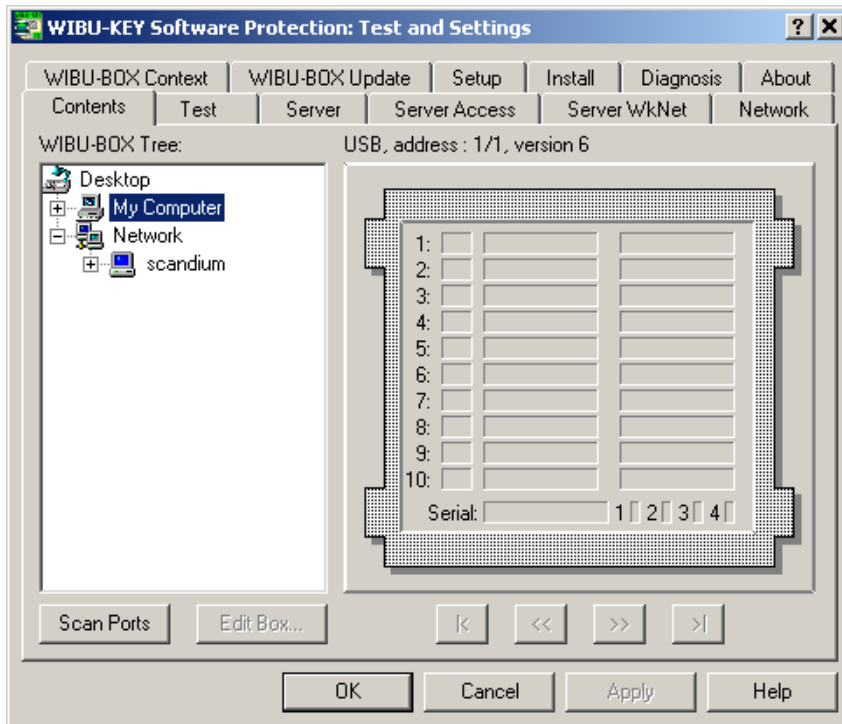


If more than one computer is given in the *WkLan Server Search List*, *12d Model* will search the list from the top down until a valid *Wibu Server* is found.

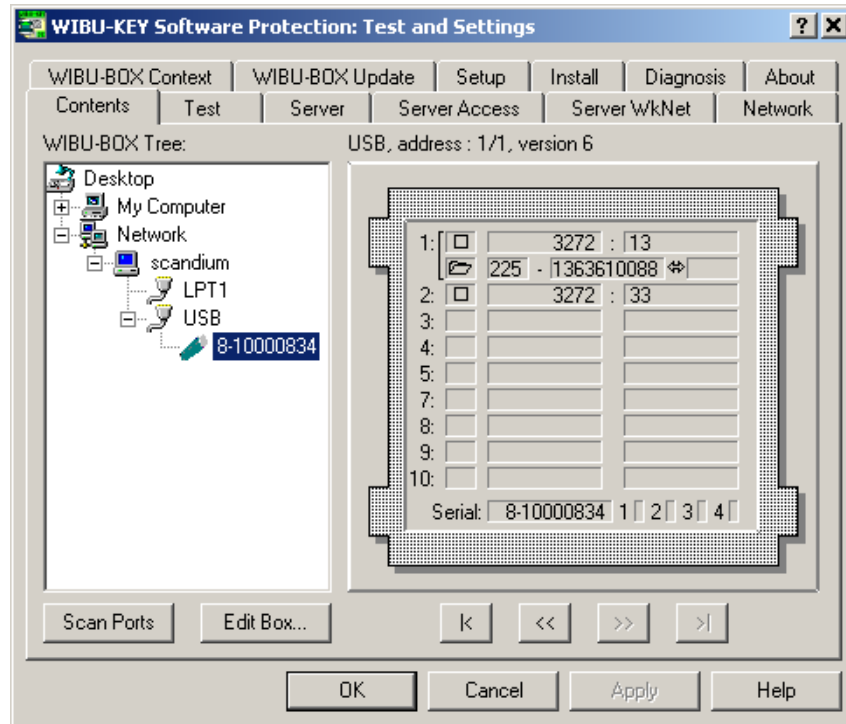
To check if the *Wibu Server* is now visible, click on the *Contents* tab, then double click on **Network** to scan the entire network.



The *Wibu Server* should now appear in the list.



Clicking on the + beside the computer name and then + beside USB should display the *Wibu network* dongle.



Rather than having to set the *WkLAN Server Search List* on each Wibu Client, all computers running *12d Model* can be supplied with the IP addresses (or computer names) of the *Wibu Servers* by specifying the IP addresses of the *Wibu Servers* in the *env.4d* file:

WIBU_IPADDR *IP address for the machine with the network dongle*
 or WIBU_IPADDR *Name of the computer with the network dongle*

To search for more than one Wibu network dongle, simply add the additional IP addresses or computer names to the WIBU_IPADDR command with each one **separated by commas**.

For example,

WIBU_IPADDR *Lithium, Anna*

The computers will be *searched* for free licenses in the order that they appear in the WIBU_IPADDR list.

Please go to the section “Updating *env.4d*” for more information on setting the IP address for one or more servers.

Default Port address

The default port used by the Wibu network dongle for communication is port 22347.

Updating the Number of Licenses

The number of licenses on a Wibu *network* dongle can be changed electronically without having to remove the dongle from the computer or returning the dongle to your local *12d Model* Distributor.

Updating the number of licenses is a two step process:

Step 1 Generating the Wibu *network* dongle context file (.rtc)

The *context* (.rtc) file holds information about the current settings in the Wibu *network* dongle. 12d Solutions usually know the setting of the network dongle and this step is normally not required. However in the case of a problem, you may be asked to generate the .rtc file and email it to your local *12d Model* Distributor.

If you need to generate the .rtc file, please go to “Step 1: Generating the Wibu Context File (.rtc)” on page 37.

Step 2 Updating the number of licenses with the .rtu file

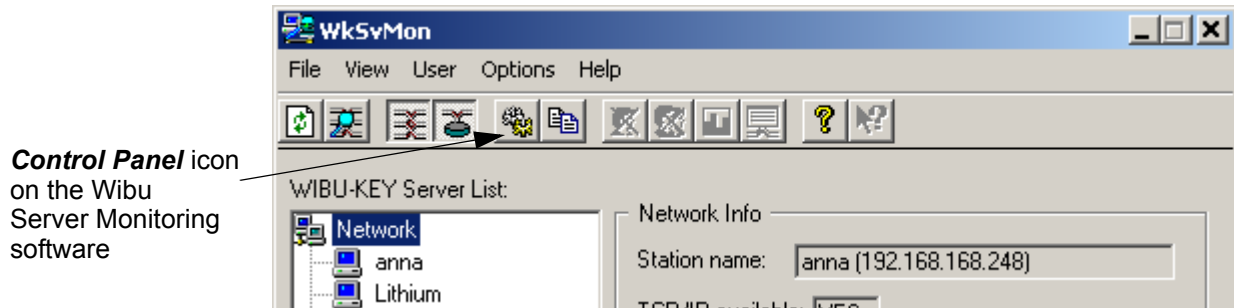
You will be sent a special file (ending in .rtu) which is used to update the number of licenses on the Wibu *network* dongle.

If you have the .rtu file, please go to “Step 2a: Automatically Updating the Licenses with the .rtu File” on page 42.

Step 1: Generating the Wibu Context File (.rtc)

The follow steps will generate a new context file for a Wibu *network* dongle.

To generate the context file, the *Wibu Control* panel is required and it can be accessed by either clicking on the *Control panel* icon on the Wibu Monitoring software,

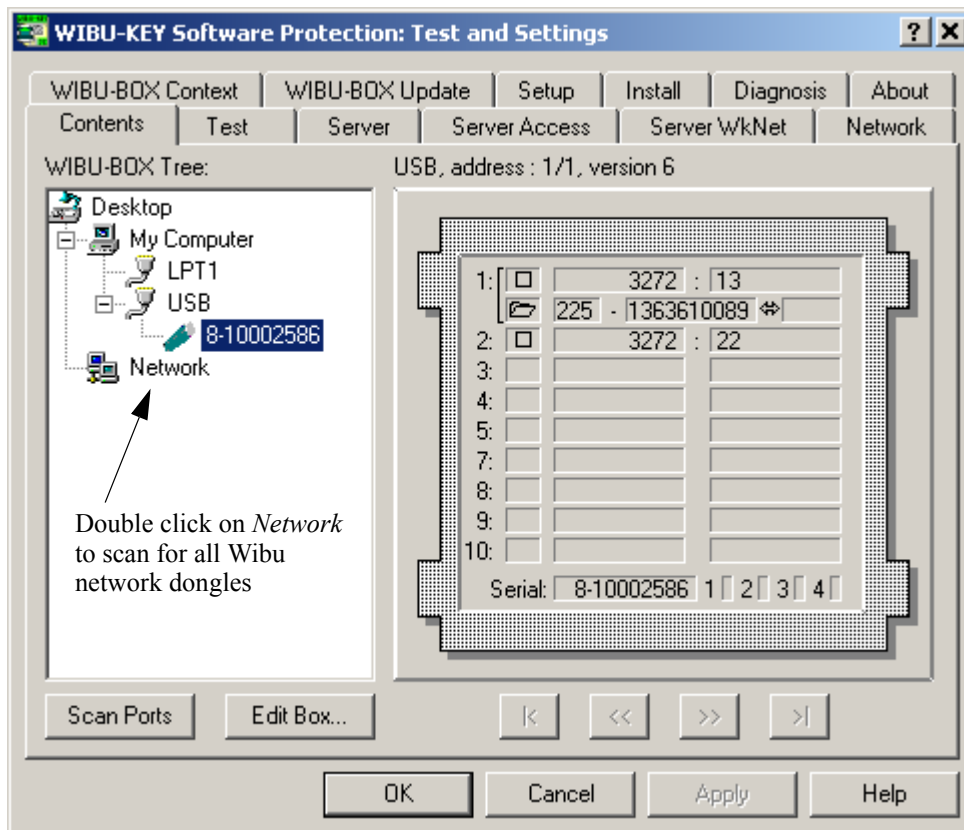


Control Panel icon on the Wibu Server Monitoring software

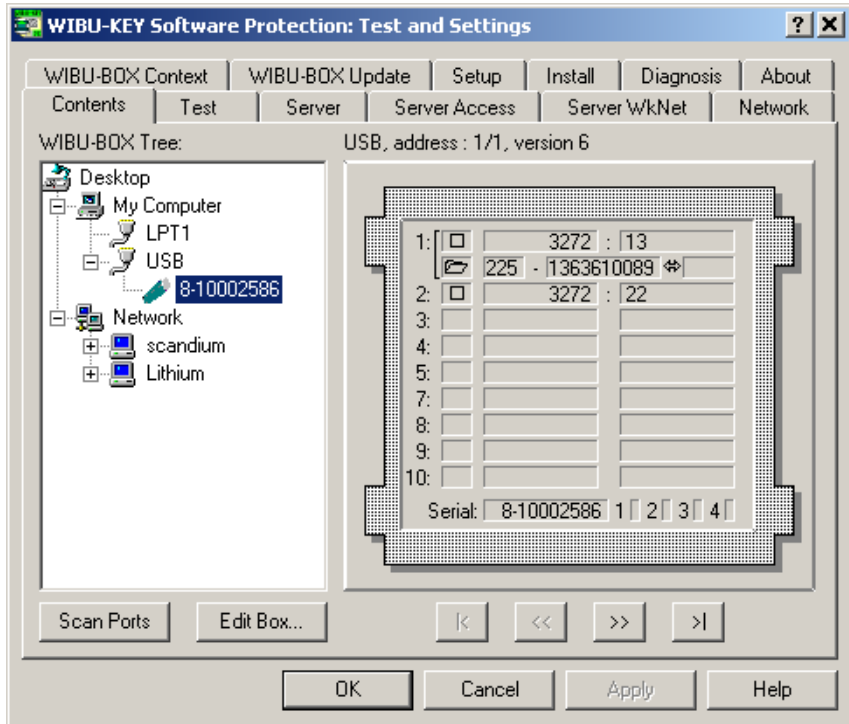
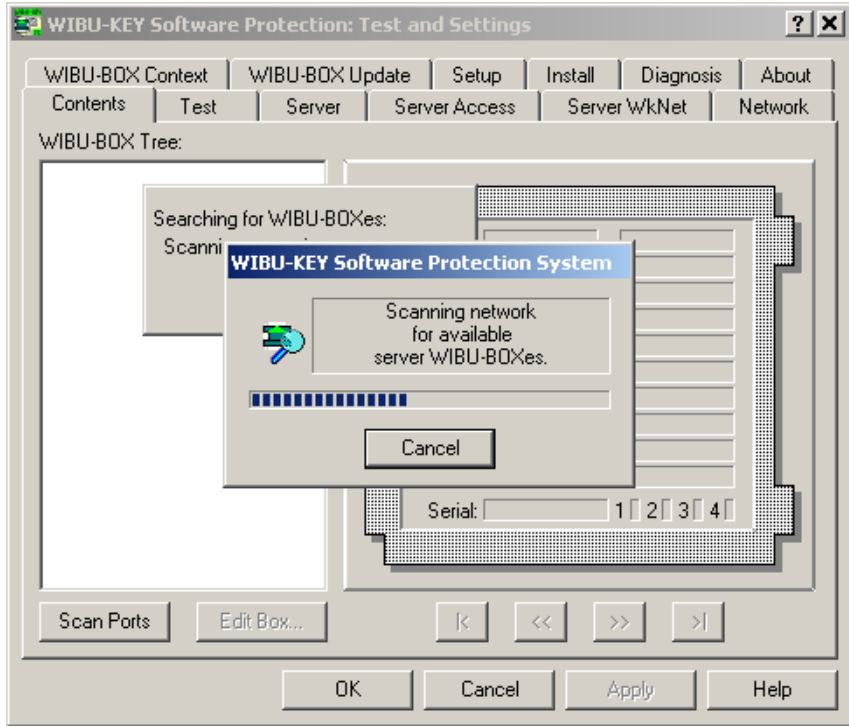
or if the *Wibu Network Server Monitoring* software is not running, by simply selecting

Start =>Settings =>Control Panel =>WIBU-KEY

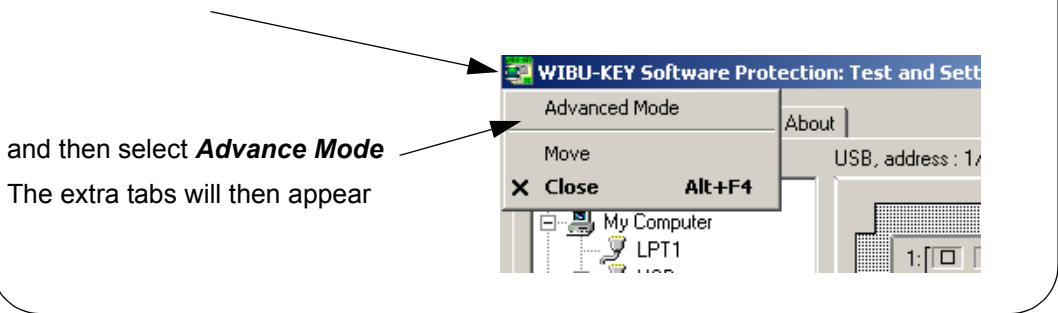
In either case, the *WIBU-KEY Software Protection: Test and Settings* dialogue is displayed:



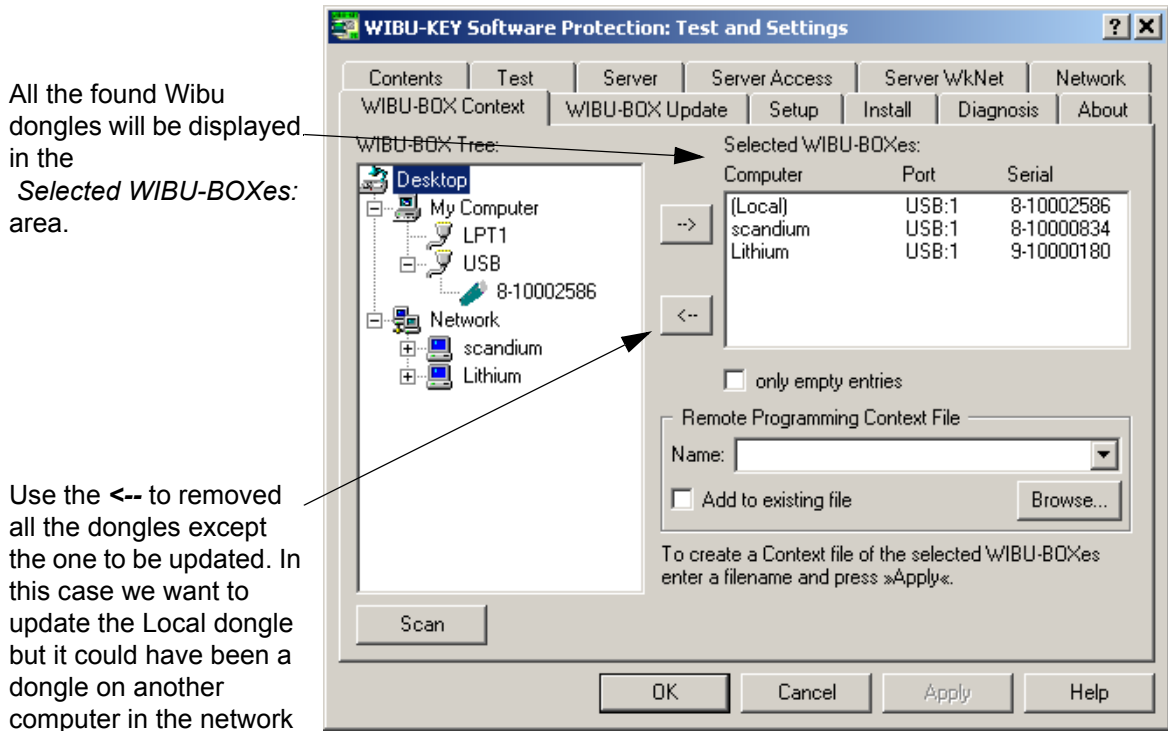
When starting up, the software scans the local computer and reports on any attached Wibu dongles. Double click on **Network** to scan the entire network and display all the attached *Wibu* network dongles.



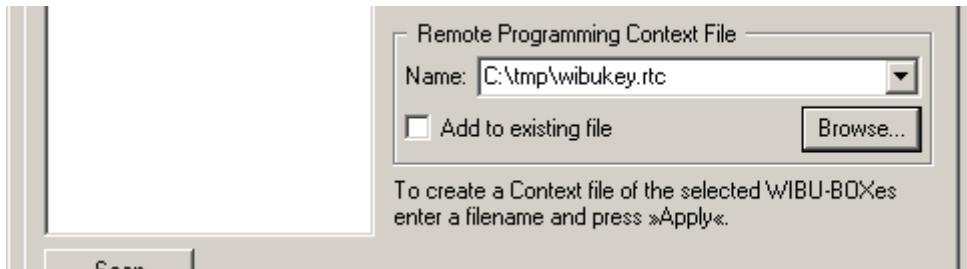
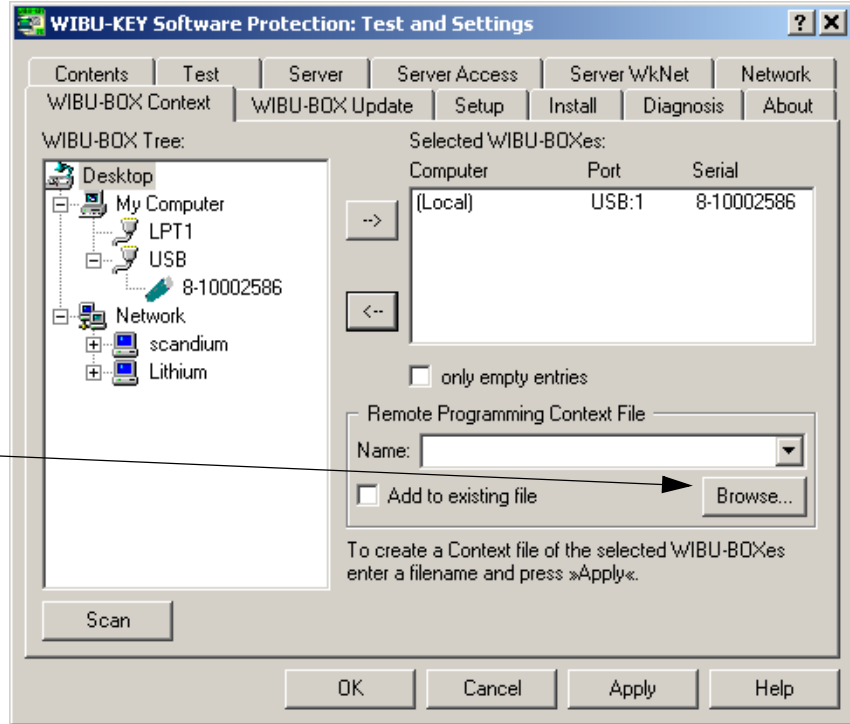
NOTE: if the dialogue has only *four* tabs instead of twelve tabs then click on the *Green* icon on the top left hand corner next to the words *WIBU-KEY*

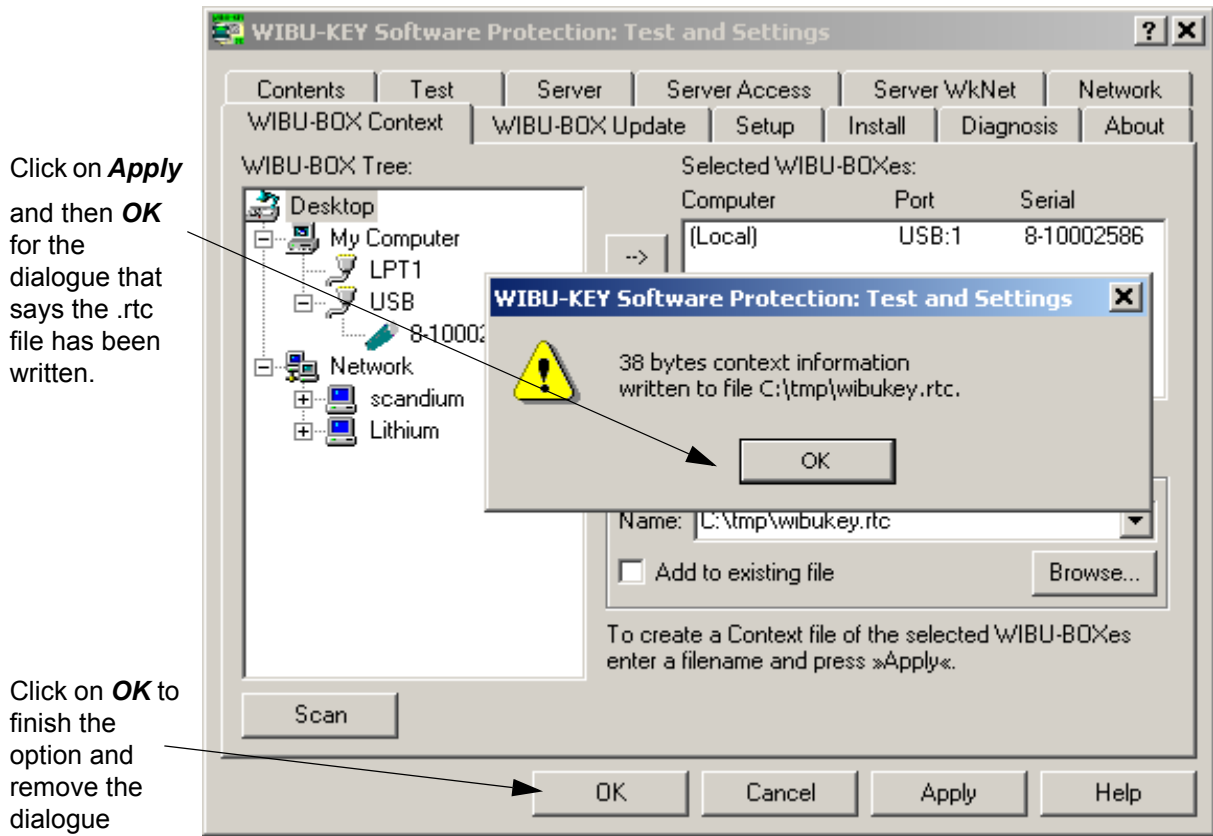


Now Click on the **WIBU-BOX Context** tab:



Use the **Browse** button to select an folder to write the file to and then type in a file name ending in *.rtc* (the default name *wibuykey.rtc* will do).





Email the .rtc file to your 12d Model Distributor and you will be sent back a .rtu file to update the Wibu network dongle.

Step 2a: Automatically Updating the Licenses with the .rtu File

The number of licenses on a Wibu *network* dongle can be changed electronically without having to remove the dongle from the computer or return the dongle to 12D Solutions.

To update the number of licenses, you will be sent a file of with the same name as the *12d Model Wibu network* dongle number but ending in ".rtu".

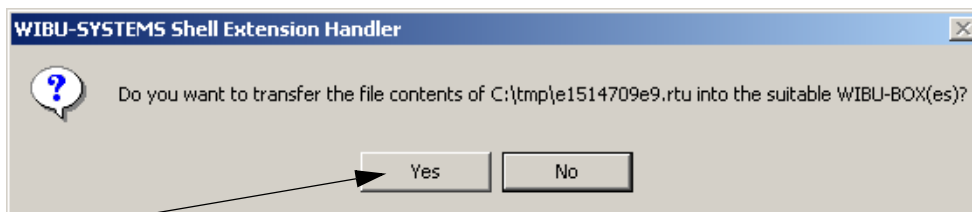
For example, if the *12d Model Wibu network* dongle number being modified is *e1514709e9*, the update file will be called *e1514709e9.rtu*.

The steps below will show how to use the .rtu file to update the number of licenses on your Wibu *network* dongle.

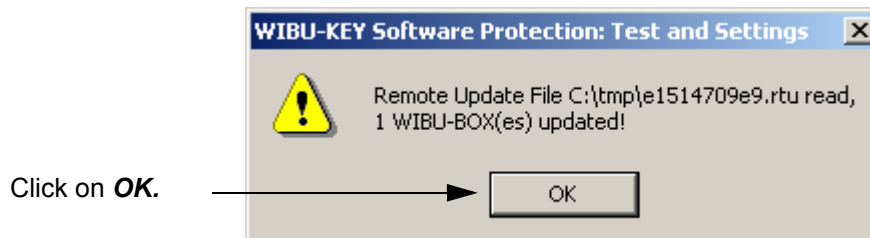
You need to have System Administrator rights to update the Wibu network dongle.

Before updating a Wibu *network* dongle, run the *Wibu Network Server Monitoring* software (See "The Wibu Network Server Monitoring Software" on page 26.) to check that no one is using the network dongle. The *Wibu Network Monitor* displays network dongle activity and it can also remove users from the network dongle.

Once all the users are off the network dongle, double click on the file *dongle_name.rtu* and the following dialogue will appear:



Click **Yes** and the dialogue to say the Wibu dongle has been updated should appear.



The number of licenses in the Wibu *network* dongle should now be updated. The *Wibu Network Monitor* can be used to check the number of licenses now available.

Sometimes the Wibu *Network Server* service needs to be stopped and restarted on the *Wibu Server* for the new number of licenses to take effect. If this does not work, try a reboot of the computer with the Wibu *network* dongle attached to it.

If there was a problem with the update an error dialogue will appear instead of the dialogue stating that the WIBU-BOX has been updated. If this is the case, please go to section "Errors Updating the Wibu Network Dongle" on page 47

WARNING: If there is *no* association with the .rtu file, double clicking on the .rtu file won't work. In that case go to "Step 2b: Manually Updating the Licenses with the .rtu File" on page 43.

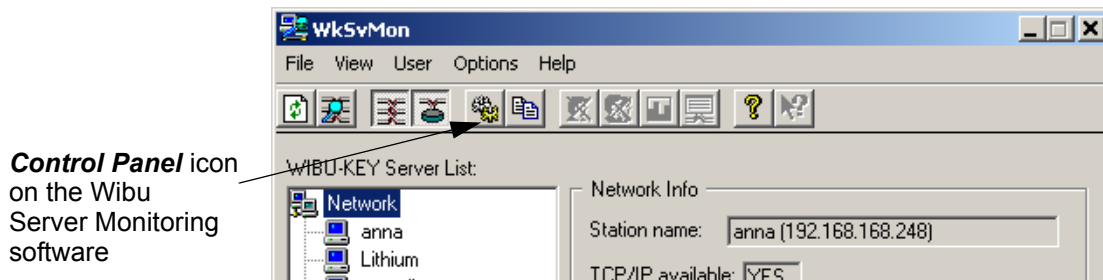
NOTE:

Because the 12d dongle number for the Wibu network dongle has not changed, a new nodes.4d file is not required.

Step 2b: Manually Updating the Licenses with the .rtu File

If there is no association with the .rtu file then double clicking on the .rtu file won't automatically run the Wibu network dongle update program. So instead, the update will have to be done manually using the Wibu Control Panel (the *WIBU-KEY Software Protection: Test and Settings* dialogue).

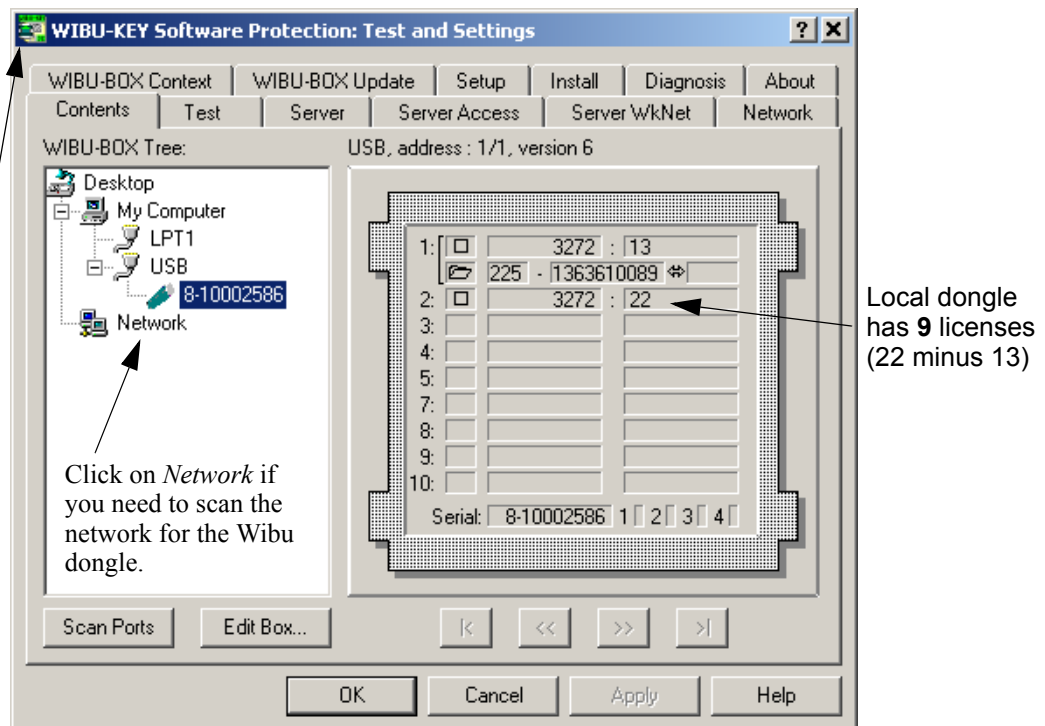
The *Wibu Control* panel can be accessed by either clicking on the *Control panel* icon on the Wibu Monitoring software,



or if the *Wibu Network Server Monitoring* software is not running, by selecting

Start =>Settings =>Control Panel =>WIBU-KEY

In either case, the *WIBU-KEY Software Protection: Test and Settings* dialogue is displayed:

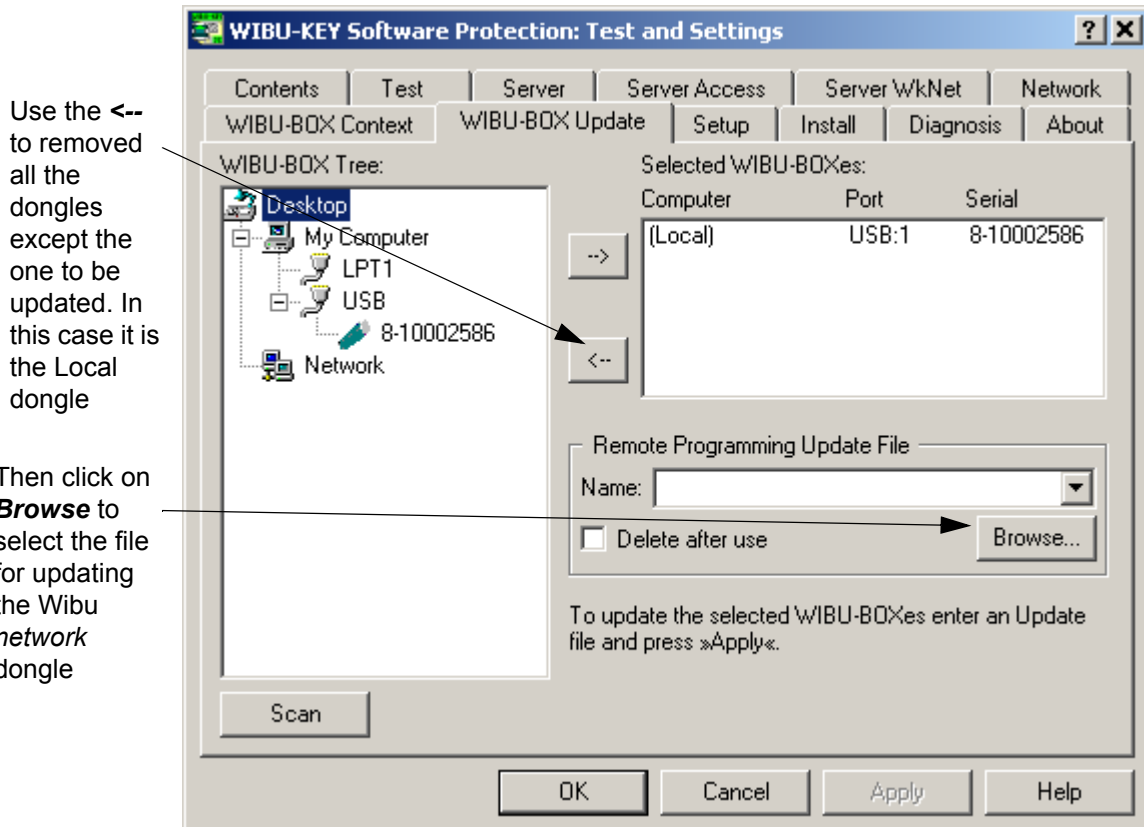


NOTE: if the dialogue has only *four* tabs instead of twelve, click on the *Green* icon on the top left hand corner next to the words *WIBU-KEY* and then select **Advance Mode**. The extra tabs will appear

When starting up, the software scans the local computer and reports on any attached Wibu dongles. In the above example, there is a Wibu *network* dongle with 9 licenses attached to the USB port of the local computer and that is the one we wish to update.

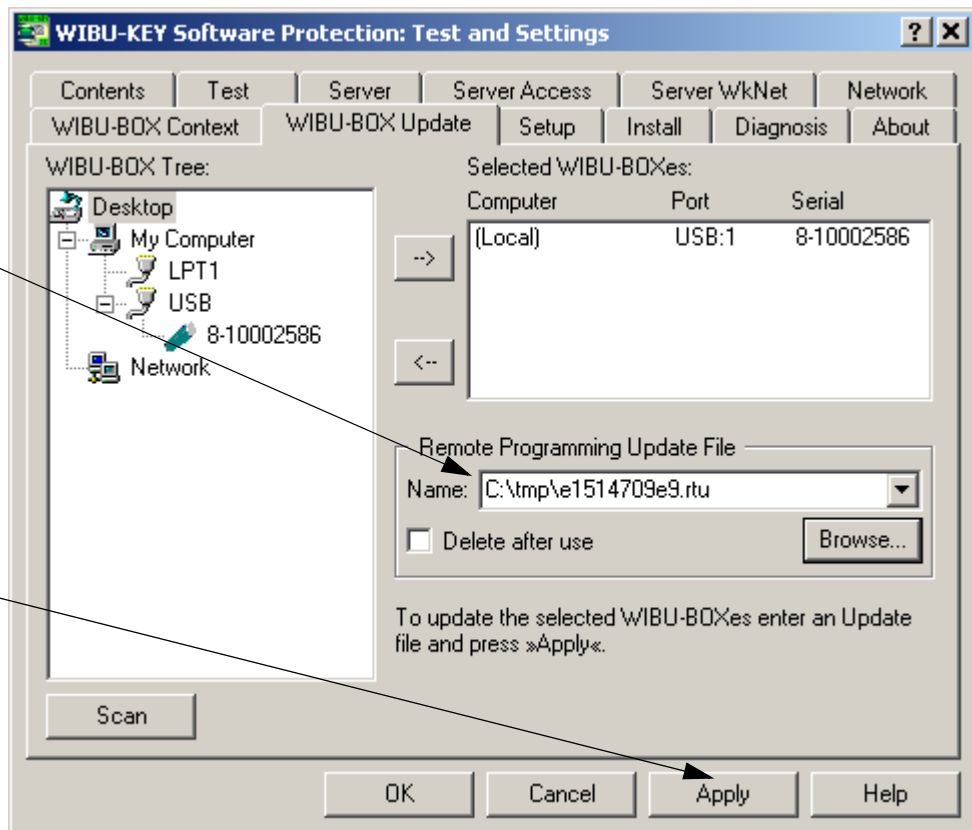
If the Wibu dongle is not locally but is on the network, clicking on **Network** will scan the entire network and all attached Wibu dongles are displayed and can be interrogated.

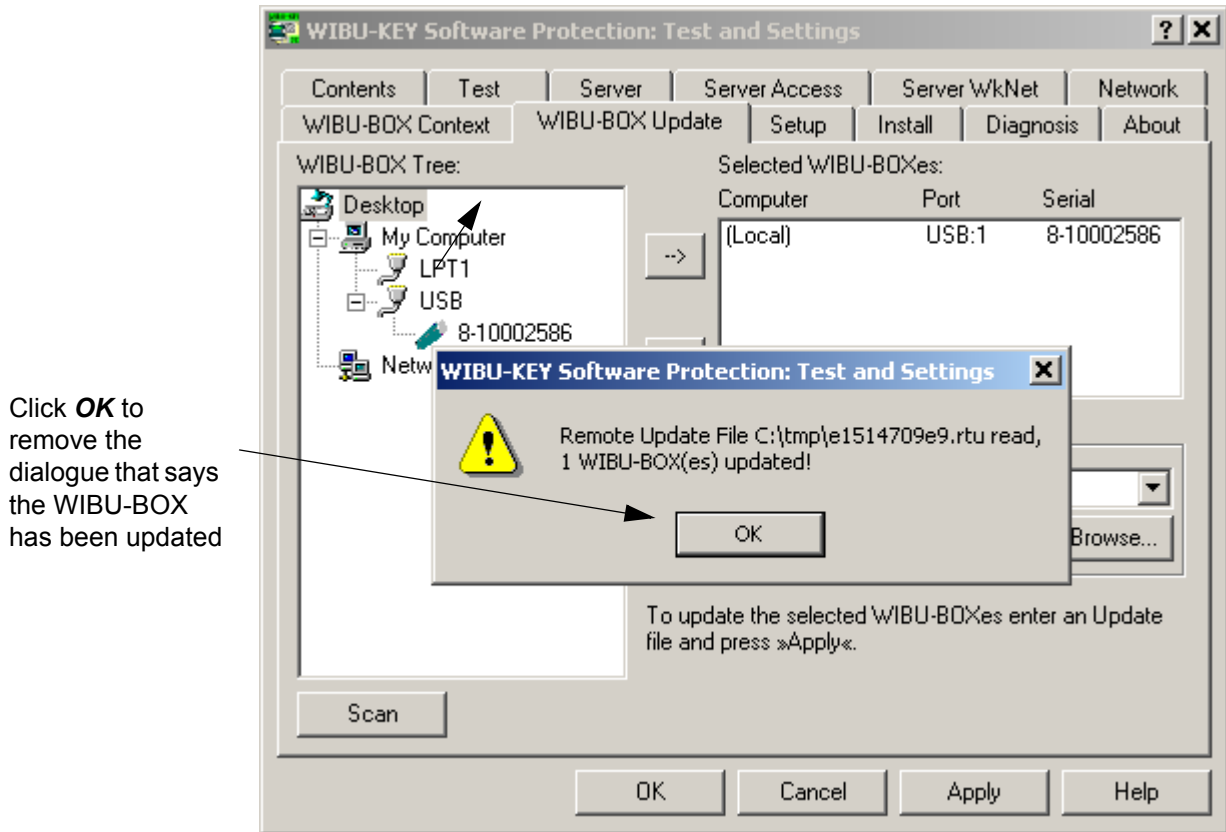
Click on the **WIBU-BOX Update** tab:



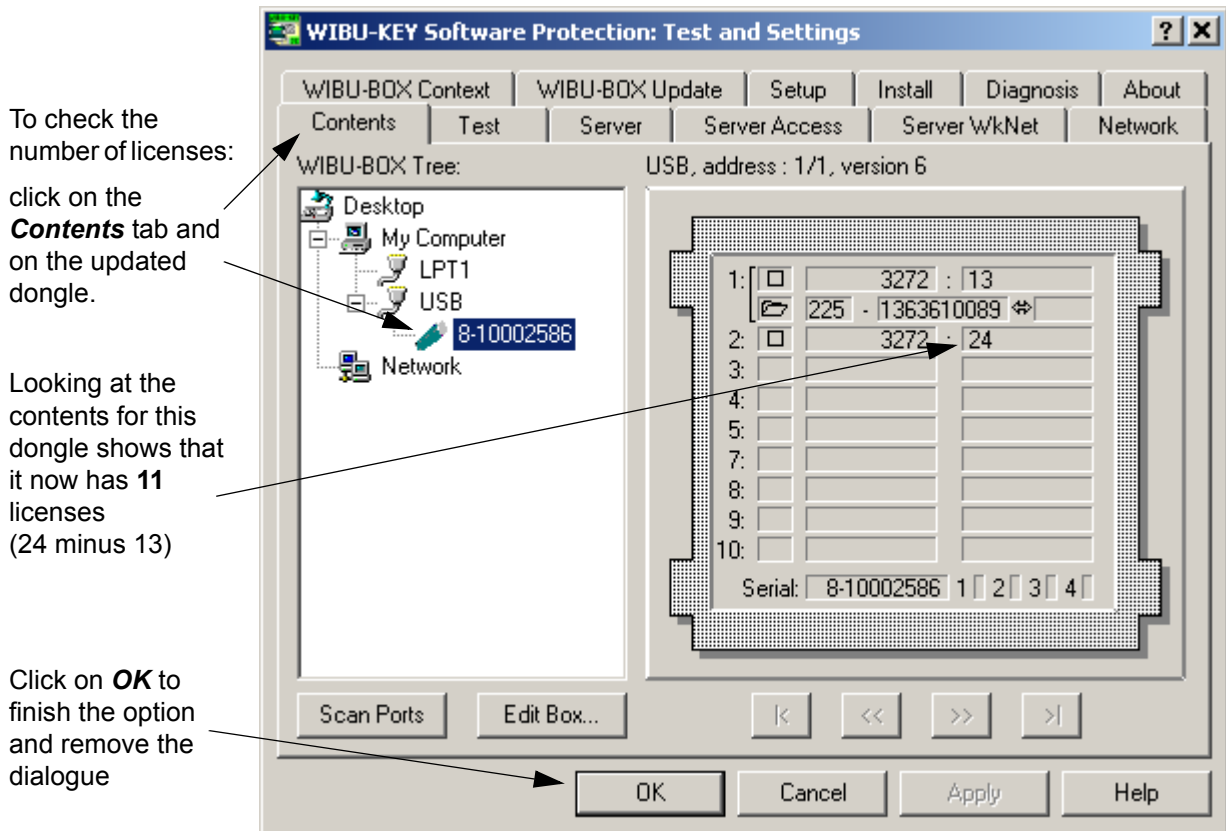
In this example the update file is "C:\tmp\ e1514709e9.rtu"

Click on **Apply** to run the update file.





The number of licenses in the Wibu *network* dongle should now be updated.



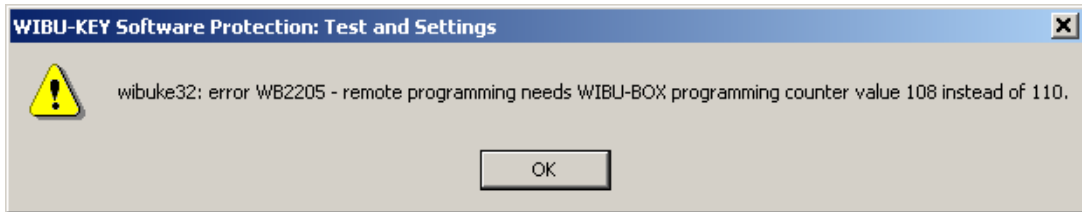
If there was a problem an error dialogue will appear instead of the dialogue stating that the WIBU-BOX has been updated. If this is the case, please go to section “Errors Updating the Wibu Network Dongle” on page 47

NOTE:

Because the 12d dongle number for the Wibu network dongle has not changed, a new nodes.4d file is not required.

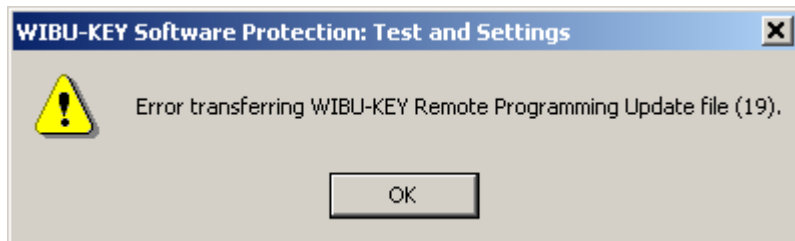
Errors Updating the Wibu Network Dongle

If there was a problem, instead of the dialogue stating that the WIBU-BOX has been updated, an error dialogue will appear. For example:



Please record the message on the error dialogue. Doing a *Print Screen* and saving the *bmp* file is the best way to record details of the error.

Click on **OK** and a final dialogue will appear



Record this error message as well (again use *Print Screen* and save the *bmp* file) and click on **OK** to terminate the update procedure.

Contact your **12d Model** Distributor with the error messages for help.

Replacing an Existing Network Dongle

Before removing a network dongle, run the *Wibu Network Server Monitoring* software (See “The Wibu Network Server Monitoring Software” on page 26.) to check that no one is using the network dongle.

If the dongle is not in use, the existing dongle can be removed from the computer and the new network dongle attached.

The new Wibu *network* dongle should now be ready to use.

If the *Wibu Network Server Monitoring* software is on automatic browse, the new dongle should appear after a few minutes. If the *Wibu Network Server Monitoring* software is not on automatic browse, do a *Browse* to rescan the network and the new dongle should appear.

If there is a problem, stop and then restart the *Wibu Network Server* software on the *Wibu Server*.

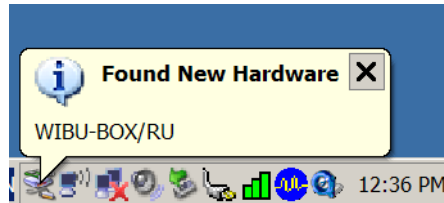
Check that the new Wibu network dongle then appears in the *Wibu Network Server Monitoring* software.

NOTE - a new nodes file will be required for the new *network* dongle

Windows XP SP2 Problems

After the WIBU drivers have been successfully installed, the WIBU USB dongle is attached to the USB port.

Windows XP realises that new hardware has been attached to the USB port and the *Found New Hardware (WIBU-BOX/RU)* message is displayed

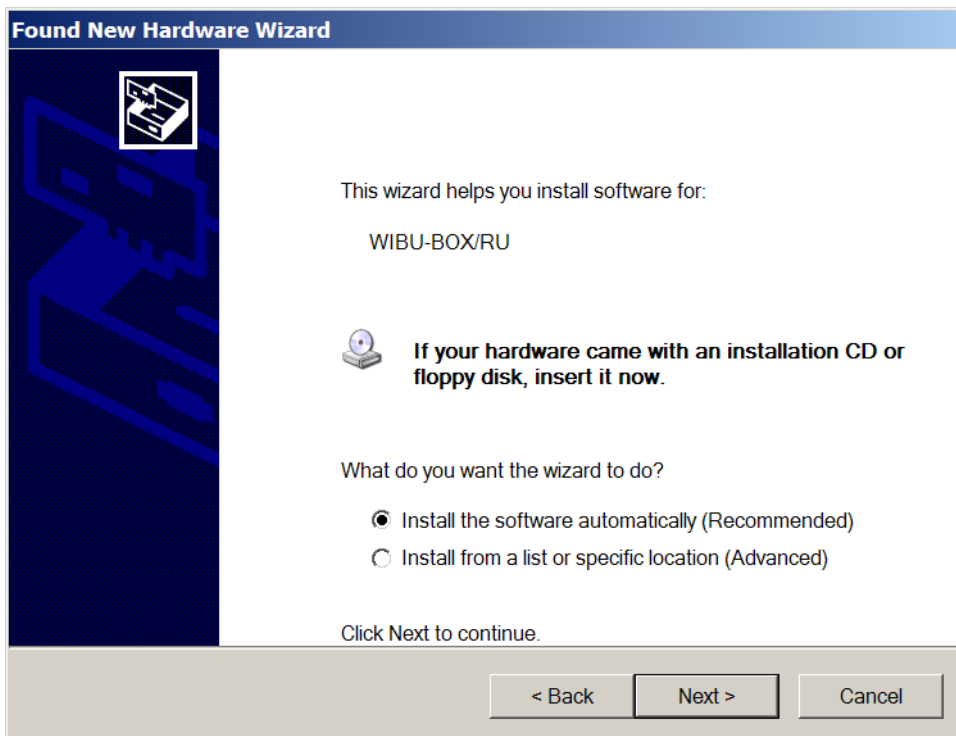


Unfortunately, XP SP2 does not find the WIBU-BOX/RU drivers and install them automatically and consequently the *Found New Hardware Wizard* appears:

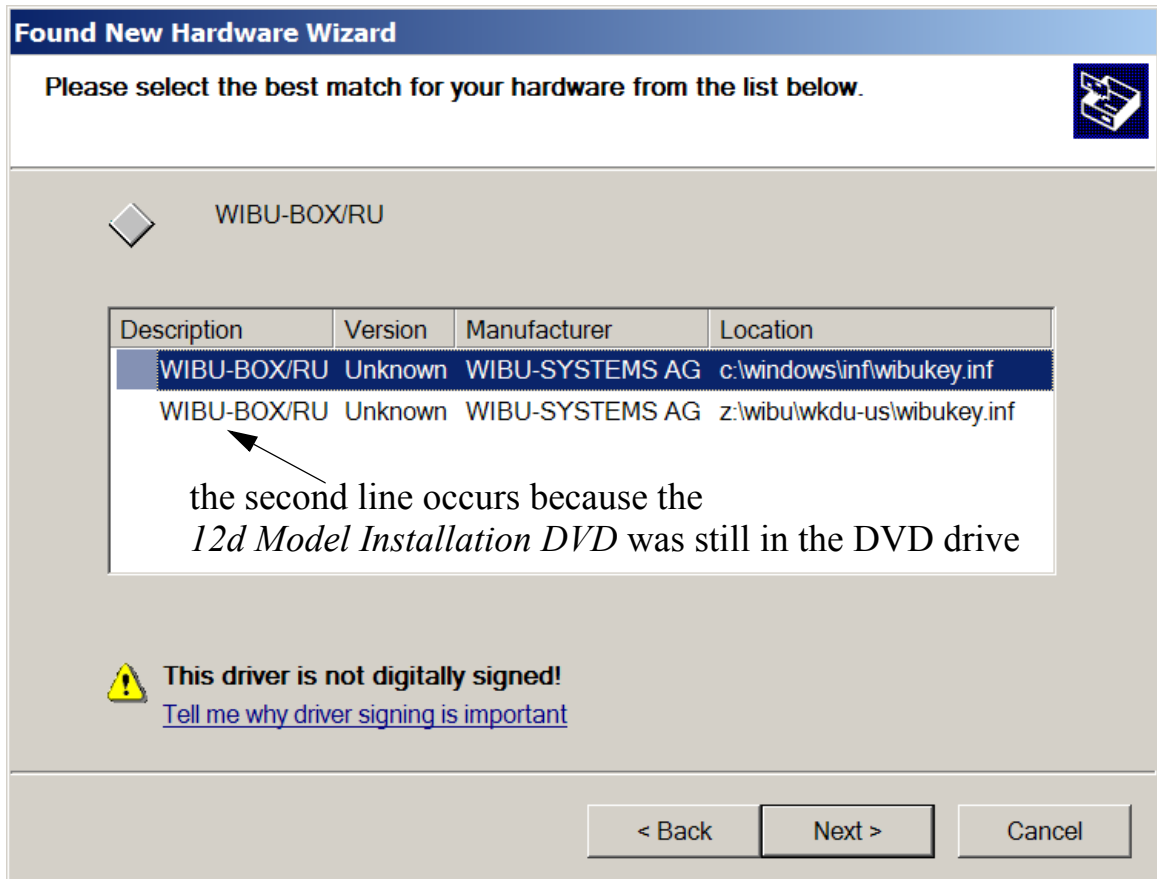




Click on "No, not this time" and select **Next** to continue



try "Install the software automatically" and select **Next** to continue

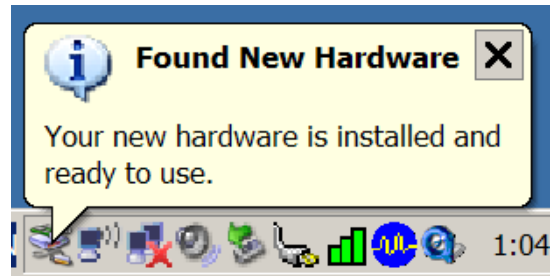


NOTE: XP now finds "C:\windows\inf" but for some reason can't when it first detects the new hardware (as it used to do in earlier XP's and Win 2000).

choose either location and select **Next** to continue



select **Finish**



The New hardware has now been installed